

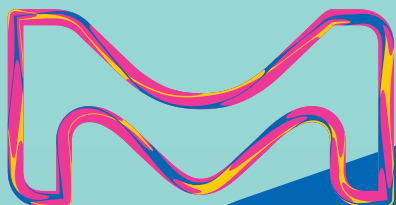
2024-25

# Analyte Quarterly



## Beyond Biomarkers

Keep your focus on the next stage. Our rigorously tested and limitation-lifting immunoassay platforms provide you with all the AssayAbilities, including Compelling PlexAbility, to take your biomarker research further.



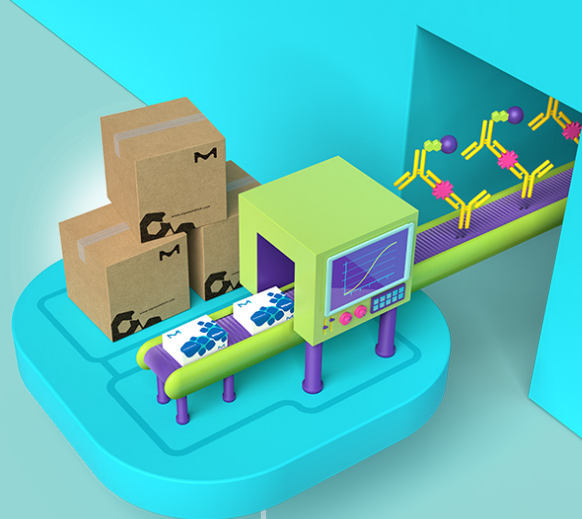
The Life Science business of Merck operates as MilliporeSigma in the U.S. and Canada.

# Millipore®

Preparation, Separation,  
Filtration & Testing Products

# Beyond Biomarkers

We are committed to delivering the best possible immunoassays for your research needs. Whether you are using our industry-leading MILLIPLEX® multiplex panels to broadly survey multiple analytes, performing femtogram/mL biomarker analysis using the SMC® ultrasensitive immunoassay platform, or examining single proteins with our tried-and-true ELISAs and RIAs, you can confidently expect reliable measurements, a simplified user experience, and knowledgeable scientific partners to help drive your biomarker project from hypothesis to publication.



## Designed Reliability

Our Conferma® ELISAs are engineered for endogenous detection and lot-to-lot consistency of routine-use biomarkers to keep your data reproducible, run after run.



## Genuine Flexability

Our industry-leading MILLIPLEX® multiplex assays for the Luminex® platform give you the FlexAbility to select your combination of biomarkers to simultaneously analyze with ease.



## Next-Level Detectability

Our ultrasensitive SMC® kits for the SMCxPRO® platform take your research to the next level by detecting biomarkers down to fg/mL levels.



## Complete Compareability

Our Belysa® Immunoassay Curve Fitting Software helps you quickly compare your standard and sample curves with ease, confirming that your methods and plates ran consistently.



## Expert Customability

Our Custom Assay Development & Innovation (CADI) team of experienced scientists partner with you to develop custom immunoassays for your biomarker(s) of interest, accelerating your projects from discovery to clinical trials.



Keep your focus on the next stage.

# Immunoassays at a Glance

	MILLIPLEX® Multiplex Assays			
	Qualified Assays	Screening Assays	SMC® Assays	ELISAs
Species	Human	•	•	•
	Mouse	•		•
	Rat	•		•
	Non-Human Primate	•		•
	Canine	•		•
	Feline	•		•
	Bovine	•		•
	Chicken	•		
	Equine	•		•
	Ovine	•		•
	Porcine	•		•
Multi-Species	•		•	
Analytes	Human	>580	115	>40
	Mouse	>180		3
	Rat	>90		3
	Non-Human Primate	>60		1
	Canine	>30		1
	Feline	>15		
	Bovine	>15		
	Chicken	>10		
	Equine	>20		
	Ovine	>10		
	Porcine	>10		
Multi-Species	>5		1	
Research Areas	Immunology/Inflammation	•	•	•
	Immune Response	•	•	•
	Virology	•		•
	Metabolism/Endocrinology	•	•	•
	Cardiovascular Disease	•	•	•
	Bone	•	•	
	Cancer	•	•	•
	Neuroscience	•	•	•
	Toxicity	•	•	•
Cell Signaling	•			
Kit Format	Configurable (Select Your Own Analytes)*	•	•	-
	Premixed (Fixed Panel)*	•	•	-
	Bulk Premixed (Space Saver)*	•	•	-
	Custom Premix*	•	•	-
	Lot Matched at Kit Level			•
Qualified Sample Types (see specific kits for more details)	Serum/Plasma	•		•
	Cell Culture Supernatants	•	Screening assays are sample agnostic	•
	Cell/Tissue Lysates	•		•
	Cerebrospinal Fluid	•		•
	Urine	•		•
Custom Kits and Services	—		•	•

# New Immunoassay Products

## New Kits

Description	Species	Cat. No.
<b>MILLIPLEX® Panels</b>		
Exosome Characterization Panel	Human	HEXSM-170K
PLEXpedition Screening Panel	Human	HPLX1-115SP
PLEXpedition Screening Premixed 80-Plex Kit	Human	HPLX1-115SP-PX80
PLEXpedition Screening Premixed 115-Plex Kit	Human	HPLX1-115SP-PX
<b>SMC® Kits</b>		
IFN $\lambda$ 1 High Sensitivity Immunoassay Kit	Human	03-0213-00
pTau 217 High Sensitivity Immunoassay Kit	Human	03-0210-00
pTau 231 High Sensitivity Immunoassay Kit	Human	03-0211-00

### Streamline Biomarker Discovery

#### Get Compelling PlexAbility with the MILLIPLEX® PLEXpedition Screening Panel

Use this fit-for-purpose assay to simultaneously screen up to 115 analytes including cytokines, chemokines, growth factors, matrix metalloproteinases, and biomarkers of bone health, metabolism, and cardiovascular disease while saving time, money, and sample without compromising specificity.



Propel your research forward at [SigmaAldrich.com/plexpedition](https://SigmaAldrich.com/plexpedition)



### Coming Soon

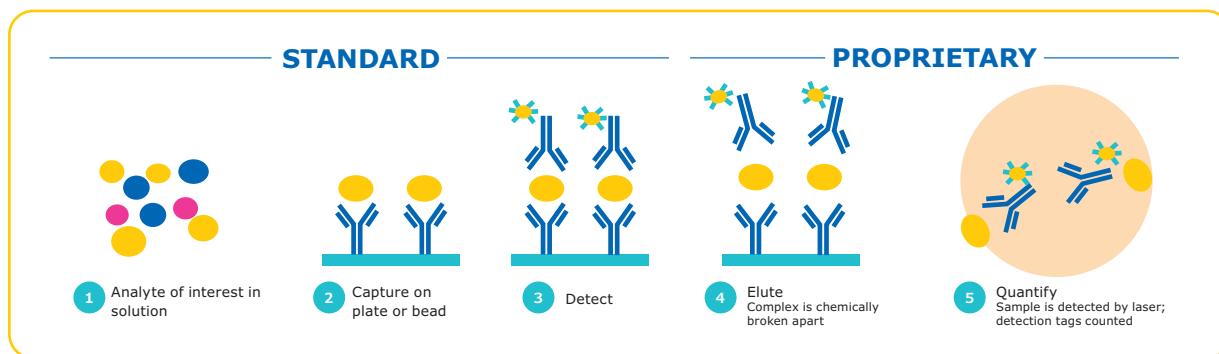
Description	Species
<b>MILLIPLEX® Panels</b>	
Humanized Mouse Panel	Human, Mouse
Cytokine/Chemokine/Growth Factor Expanded Panel	Mouse
Cell Health Panel	Human
Rat/Mouse TSH Singleplex	Rat, Mouse
<b>SMC® Kits</b>	
IL-22 Binding Protein	Human
CTLA-4	Human



# SMC<sup>®</sup> Technology

## Reduced background + increased signal

SMC<sup>®</sup> technology provides maximum immunoassay performance while following a workflow similar to traditional ELISA technology, as shown below. By combining a unique assay elution step and robust digital counting, SMC<sup>®</sup> technology achieves improved signal-to-noise ratios over traditional immunoassay technologies. The SMC<sup>®</sup> technology thus provides enhanced quantification at both low and high levels of expression on one complete system.



### Steps 2-3

Antibodies translate each biomarker into a signal

### Step 4

Fluorescent dye-labeled detection antibodies dissociate from the immunocomplex

### Step 5

On the SMCxPRO<sup>®</sup> instrument, signal is collected from free-floating fluorochromes using a rotating laser, camera, and counting individual molecules by an Avalanche Photodiode

## Digital counting improves sensitivity and dynamic range

The SMCxPRO<sup>®</sup> instrument captures the sum of all digital events counted above the background threshold. The algorithm of the SMCxPRO<sup>®</sup> instrument computes digital events across a spectrum of time series for a single standard. The digital counting of molecules thus improves the assay sensitivity and extends the assay dynamic range beyond what can be achieved with traditional methods.

### What Is SMC<sup>®</sup> Technology?

Satisfy your curiosity by visiting [SigmaAldrich.com/smc-learn](https://SigmaAldrich.com/smc-learn)



# Empower Your Biomarker Research

## Ultrasensitive Detection with the SMCxPRO® Immunoassay System



- Ultrasensitive detection down to femtogram/mL
- Lightweight (22.7 kg/50 lbs), fluidics-free benchtop instrument
- Results in hours (average assay time of ~4.5 hours and read time ~45 min)
- More than 40 SMC® assays available from a growing menu
- Bead-based and plate-based assays available
- Custom assay services and sample testing options
- Cat. No. **95-0100-00**

### Assay Performance and Instrument Specifications

Dynamic Range	> 4 logs
Precision	< 10% CV (response measurements from 30 fM calibrator, n=20)
Limit of Detection (LOD)	<1 fM
Slope	> 1.2 response/fM (determined from calibrator set: 0-300 fM of 150 kD antibody labeled with fluorophore)
Background	< 3 response/fM (determined from calibrator set: 0-300 fM of 150 kD antibody labeled with fluorophore)
Instrument Footprint	406.4 mm H x 355.6 mm W x 444.5 mm D (16"H x 14"W x 17.5"D)
Read Format	96-well custom plate optimized for SMC® technology
Regulatory Compliance	21 CFR part II and LIMS compatible
Automation Compatible	Yes

### Three Levels of Onsite Service Support for SMCxPRO® Platform

- **Total Service:** Unlimited visits including labor, travel, expenses, and all parts for any service for one year
- **Advanced Service:** Labor, travel, and expenses for one preventative maintenance and one floating visit for one year
- **Essential Service:** Labor for one preventative maintenance visit for one year

## SMC® Immunoassay Kits

Product Description	Cat. No.	LLOQ (pg/mL) <sup>1</sup>	Species <sup>2</sup>	Sample Type <sup>3</sup>
<b>Immunology/Inflammation</b>				
IFN-α2	03-0186-00	0.06	H	P,S
IFN-β1	03-0191-00	0.15	H	P,S
IFN-γ	03-0181-00	0.03	H	P,S
IFNλ1 <b>NEW</b>	03-0213-00	0.26	H	P,S
IL-1α2	03-0167-00	0.12	H	P,S
IL-1β	03-0160-00	0.20	H	P,S
IL-2	03-0195-00	0.09	H	P,S
IL-4	03-0161-00	0.04	H	P,S
IL-5	03-0168-00	0.04	H	P,S
IL-6	03-0155-00	0.08	H	P,S
IL-10	03-0176-00	0.10	H	P,S
IL-12p70	03-0182-00	0.10	H	P,S
IL-13	03-0156-00	0.04	H	P,S

# SMC<sup>®</sup> Immunoassay Kits (continued)

Product Description	Cat. No.	LLOQ (pg/mL) <sup>1</sup>	Species <sup>2</sup>	Sample Type <sup>3</sup>
<b>Immunology/Inflammation (continued)</b>				
IL-17A/F Heterodimer	03-0177-00	2.34	H	P,S
IL-17A	03-0159-00	0.07	H	P,S
IL-17F	03-0164-00	0.20	H	P,S
IL-18	03-0190-00	0.09	H	P,S
IL-22	03-0162-00	0.10	H	P,S
IL-23	03-0157-00	0.10	H	P,S
MCP-1	03-0187-00	0.15	H	P,S
TNFα	03-0163-00	0.20	H	P,S
VEGF-A	03-0180-00	0.20	H	P,S
<b>Neuroscience</b>				
Phospho-α-Synuclein(Ser129)	03-0188-00	0.10	H	P,S,C
Total-α-Synuclein	03-0196-00	1.95	H	P,S,C
Amyloid beta 1-40	03-0145-00	5.86	H,M,R	P,C
Amyloid beta 1-42	03-0146-00	0.98	H,M,R	P,C
BDNF	03-0171-00	0.04	H	P,S,C
GFAP	03-0203-00	0.23	H	P,S,C
NF-L	03-0202-00	0.87	H	P,S,C
NPTX2	03-0199-00	0.58	H	P,S,C
SNAP-25	03-0206-00	0.26	H	P,S,C
TDP-43	03-0205-00	5.21	H	P,S,C
Phospho-Tau(Thr181)	03-0184-00	0.94	H	P,S,C
Phospho-Tau 217 <b>NEW</b>	03-0210-00	1.95	H	P,S,C
Phospho-Tau 231 <b>NEW</b>	03-0211-00	1.95	H	P,S,C
Total Tau	03-0185-00	4.69	H	P,S,C
UCHL1	03-0183-00	2.60	H	P,S,C
<b>Cancer</b>				
PD-1	03-0207-00	3.47	H	P,S
PD-L1	03-0208-00	0.78	H	P,S
<b>Cardiovascular</b>				
cTnI	03-0154-00	0.69	H,Cy,R,C,GP	P,S
<b>Metabolism/Endocrinology</b>				
Glucagon	03-0153-00	0.78	H,M,R	P
<b>Immunogenicity</b>				
IgE <sup>4</sup>	03-0201-00	31.00	H	P,S
IgM <sup>4</sup>	03-0204-00	206.00	H	P,S
<b>Virology</b>				
SARS-CoV-2 RBD IgG <sup>5</sup>	03-0193-00	NA <sup>5</sup>	H	P,S
SARS-CoV-2 S1 IgA <sup>5</sup>	03-0197-00	NA <sup>5</sup>	H	P,S

<sup>1</sup> LLOQ: Lowest point on standard curve with CV < 20% and accuracy within 20% of expected values. <sup>2</sup> Optimized for first species type listed. Other listed species have been tested, but not optimized for peak performance. Key: H=Human; M=Mouse; R=Rat; GP=Guinea Pig; Cy=Cynomolgus Monkey; C=Canine. <sup>3</sup> Optimized for use in sample type(s) listed. Key: P=Plasma; S=Serum; L=Lysate; U=Urine; C=Cerebrospinal Fluid (CSF). <sup>4</sup> Plate-based assay. <sup>5</sup> Qualitative assay.

## Read More About Ultrasensitive Technology

Explore all the ways researchers are using SMC<sup>®</sup> ultrasensitive assays at [SigmaAldrich.com/smc-learn](https://SigmaAldrich.com/smc-learn)



# Multiplexing Options That Fit Your Purpose

Introducing Screening and Qualified MILLIPLEX® Assays

## Compelling PlexAbility with MILLIPLEX® Screening Assays

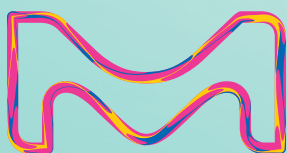
- Save sample, time, and money by profiling up to 115 analytes simultaneously without sacrificing specificity
- Excludes Serum Matrix to create sample agnostic panel for greater flexibility
- Ideal for detecting differences between experimental groups
- Human assay available
- Uses same critical raw materials as Qualified assays

Screen to identify analytes of interest and move to Qualified for further analysis



## Genuine PlexAbility with MILLIPLEX® Qualified Assays

- Lot-to-lot reproducibility with rigorous QC testing
- Includes key reagents like Quality Controls and Serum Matrix for sample normalization
- Ideal for long-term or cross-site studies
- Broadest selection of analytes across research areas and species
- Configurable, premixed, and bulk kit options to fit your exact research needs





# MILLIPLEX® Analyte Index

Analyte	Page No.	Analyte	Page No.	Analyte	Page No.
<b>4-6</b>		BAD (Ser112) .....	24	C1q (autoantibody) .....	15
4-1BBL/TNFSF9 .....	17,20	BAFF/Blys .....	14,15,17	Complement C1q .....	15
4E-BP1 (total).....	25	BAFF/Blys (autoantibody).....	15	Complement C2 .....	15
4E-BP1 (Thr37/46) .....	25	BAX (total) .....	24	Complement C3 .....	15,18
5'-NT/CD73 .....	17,18,20,22	<b>BCA-1/CXCL13</b> .....	<b>13,14,19,20,23</b>	Complement C3b .....	15
6Ckine/CCL21/Exodus-2 .....	14,19,23	Bcl-2 (total).....	24	Complement C4 .....	15,18
<b>A</b>		Bcl-2 (Ser70) .....	24	Complement C4b .....	15
α-1-Acid Glycoprotein (AGP) .	16,20,21,22	Bcl-xL (total) .....	24	Complement C5 .....	15
α-1-Antitrypsin (A1AT).....	18	Bcl-xL/BAD (interaction) .....	24	Complement C5a .....	15
α-1 Microglobulin .....	18	<b>BDNF</b> .....	<b>13,16,18,20,21</b>	Complement C5b-9 .....	15
α-2 Macroglobulin (A2M).....	16,18,20,21	Betacellulin .....	20	Complement C9 .....	15
α-Fetoprotein (AFP).....	16,17	BIM .....	24	Complement Factor B .....	15
α-MSH .....	18,21	Blk (Tyr389) .....	25	Complement Factor H.....	15,18
α-Synuclein .....	18,21	BMP-9.....	17	Complement Factor I.....	15
<b>ACTH</b> .....	<b>13,16,17,19,20,21,23</b>	<b>BNP</b> .....	<b>13,16</b>	Connective Tissue Growth Factor (CTGF).....	21
Active Caspase 8 (total).....	24	BRAF (Ser446) .....	25	Contactin-1 .....	18
Active Caspase 9 (total).....	24	BRAK/CXCL14.....	15	Corticosterone.....	21
ADAMTS13 .....	16	BTLA .....	17,20	Cortisol.....	18,23
Adiponectin .....	16,20,21	<b>C</b>		CRAF (Ser338).....	25
Adipsin/Factor D .....	15,16,20	c-Jun (Ser73) .....	24	Creatine Kinase Muscle (CKM) .....	21
Agouti-Related Protein (AgRP).....	16,19	c-Kit (panTyr) .....	25	CREB (Ser133).....	25,26
ALK-1 (soluble) .....	20	c-Kit/SCFR (soluble).....	17	CREB (total) .....	25,26
Akt/PKB (Ser473).....	24,25,26	c-Met/HGFR (panTyr).....	25	CTACK/CCL27.....	14,16,20,23
Akt/PKB (total) .....	24,25,26	c-Myc (total).....	25	CTAG1B/NY-ESO-1 (autoantibody).....	17
Akt1 (Ser473).....	26	<b>C-Peptide</b> .....	<b>13,16,19</b>	CTLA-4/CD152 .....	17,20
Akt1 (total) .....	26	C-Peptide 2 .....	20,21	<b>CXCL6/GCP-2</b> .....	<b>13,14,15,16</b>
Akt2 (Ser474).....	26	C-Reactive Protein (CRP) .....	16,18,20,22	CXCL16.....	14,15,16,20
Akt2 (total) .....	26	CA125 .....	17	CYFRA21-1 .....	17
Albumin .....	19,22,23	CA15-3 .....	17	Cystatin C .....	18,21,22,23
ALDH1A1 .....	17	CA19-9 .....	17		
Amphiregulin .....	20	Calbindin .....	18	<b>D</b>	
<b>Amylin (active)</b> .....	<b>13,16,19,20,21</b>	Calreticulin (CALR) .....	17	D-dimer.....	16
Amylin (total) .....	16,22	Carbonic Anhydrase 9 (CA9).....	17	<b>DKK1</b> .....	<b>13,17,21</b>
Amyloid beta 1-40 (Aβ 1-40) .....	19,21	<b>Cardiac Troponin I (cTnI)</b> .....	<b>13,16,20,21</b>	DPP4 .....	17
Amyloid beta 1-42 (Aβ 1-42) .....	19,21	Cardiac Troponin T (cTnT).....	16,20,21		
Angiogenin (ANG) .....	18	Cathepsin D .....	17,18	<b>E</b>	
Angiopoietin-2 .....	17,20	Caveolin-1 (CAV-1) .....	21	E-Cadherin.....	17,20
Angiostatin/Kringle .....	17	CCL28 .....	14,15	<b>EGF</b> .....	<b>13,14,17,18,20,21,22</b>
Angiotensinogen (AGT).....	18	CCNB1/Cyclin B1 (autoantibody) .....	17	EGFR/HER1/ErbB1 (soluble) .....	15,17
ANGPTL3 .....	16	CD3ε (panTyr).....	26	EGFR2/Her2/ErbB2 (soluble) .....	17
ANGPTL4 .....	16	CD14 (soluble) .....	17	EGFR3/Her3/ErbB3 (soluble) .....	17
ANGPTL6/AGF.....	16	CD25/IL-2Ra.....	15,17,19,20	eIF-4B (Ser422) .....	25
Apelin.....	16	CD27 .....	17,20	eIF-4E (Ser209) .....	25
Apolipoprotein AI (Apo AI) .....	17,18	CD28 .....	17	eIF-4G (Ser1108).....	25
Apolipoprotein AII (Apo AII).....	17	CD30/TNFRSF8 (soluble).....	15,17,19	eIF2α (Ser51) .....	25
Apolipoprotein B (Apo B).....	17	CD31/PECAM-1 (soluble) .....	16,17,20	<b>ENA-78/CXCL5</b> .....	<b>13,14,23</b>
Apolipoprotein CII (Apo CII).....	17	CD40 .....	17,20	Endocan-1 (ESM-1).....	16,20
Apolipoprotein CIII (Apo CIII) .....	17,18	<b>CD40L (soluble)</b> .....	<b>13,14,17,19,20</b>	Endoglin .....	17,20
Apolipoprotein E (Apo E).....	17,18	CD44 .....	17	Endostatin .....	17
ApoE4.....	18	CD63 .....	17	Endothelin-1.....	17,20
APRIL .....	14,17	CD80/B7-1 .....	17,20	ENO1 (autoantibody) .....	17
Arginase-1 (ARG1) .....	17,18,22	CD81 .....	17	<b>Eotaxin/CCL11</b> .....	<b>13,14,19,21,22</b>
Argonaute-2 (Ago2).....	17	CD86/B7-2 .....	17	<b>Eotaxin-2/CCL24/MIP1F-2</b> .....	<b>13,14,23</b>
ATF2 (Thr71) .....	24	CD137/4-1BB/TNFRSF9 (soluble) .....	14,17,19,20	<b>Eotaxin-3/CCL26</b> .....	<b>13,14,23</b>
ATR (total) .....	24	CD226/DNAM-1.....	17,20	EpCAM.....	17
AXL (soluble) .....	17	CD9 .....	17	<b>Erythropoietin (EPO)</b> .....	<b>13,16,19,20,21</b>
<b>B</b>		CEA.....	17	ErbB1/EGFR (panTyr).....	25
β-2-Microglobulin .....	18,21,22,23	CENP-A (autoantibody) .....	15	ErbB2/HER2 (panTyr) .....	25
β-Endorphin .....	18,21	CENP-B (autoantibody) .....	15	ErbB3/HER3 (panTyr) .....	25
β-2-Glycoprotein (autoantibody) .....	15	Chk1 (Ser345) .....	24	ErbB4/HER4 (panTyr) .....	25
β-Tubulin (total).....	26	Chk2 (Thr68).....	24	Erk/MAPK 1/2 (Thr185/Tyr187) .	24,25,26
B7-H2/ICOSL .....	17,20	<b>CK-MB</b> .....	<b>13,16</b>	Erk/MAPK 1/2 (total) .....	25,26
B7-H3/CD276.....	17,20	Clusterin .....	18,21,22,23	E-Selectin (soluble) .....	16,17,20,21
B7-H4/VTCN1 .....	17	CNTF .....	16,19	Estradiol .....	23
B7-H5/VISTA .....	17	Collagen IV .....	18		
B7-H6 .....	17	COMP (cartilage oligomeric matrix protein) .....	15		
BAD (total).....	24				

# MILLIPLEX® Analyte Index (continued)

Analyte	Page No.	Analyte	Page No.	Analyte	Page No.
<b>F</b>		HCC-4/CCL16	15	IL-4 (autoantibody)	15
FABP1	16,18	HCGβ	17	IL-4R (soluble)	15,19
FABP3	13,16,18,21	Hck (Tyr411)	25	IL-5	13,14,19,21,22
FABP4	13,16	HE4	17	IL-6	13,14,16,17,19,20,21,22
FADD (Ser194)	25	Hepsin	17	IL-6 (autoantibody)	15
Fas Ligand (sFasL) (soluble)	13,14,15,17,19,20	HER2/ErbB2 (autoantibody)	17	IL-6R (soluble)	15,19
Fas/TNFRSF6 (soluble)	13,14,17,19,22	HGF	13,16,17,20	IL-6Ra (soluble)	17
Ferritin	17,18	HGFR/c-Met (soluble)	17	IL-7	13,14,19,22
Fetuin A	16,18	HIF-1α (autoantibody)	17	IL-8/CXCL8	13,14,15,16,17,19,22,23
FGF-1/FGF-acidic	17,18	HMGB1	14,15	IL-8/CXCL8 (autoantibody)	15
FGF-2/FGF-basic	13,14,17,19,20,22	HSP27 (Ser78)	24	IL-9	13,14,19
FGF-19	16	HSP60 (autoantibody)	17	IL-10	13,14,16,19,20,21,22
FGF-21	13,16,20,21	HSP70	15	IL-10 (autoantibody)	15
FGF-23	13,16,17,21	Human Serum Albumin (HSA)	18	IL-11	13,14,15,19
FGFR1 (panTyr)	25	HVEM	17,20	IL-12	22
FGL1/epassocin	17	<b>I</b>		IL-12 (p40)	13,14,19,22
Fgr (Tyr412)	25	I-309/CCL1	13,14,23	IL-12 (p40) (autoantibody)	15
Fibrinogen	16,22	ICAM-1 (soluble)	15,16,18,20,21	IL-12 (p70)	13,14,19,21,22
Fibroblast Activation Protein (FAP)	17	ICOS	17	IL-13	13,14,19,21,22
Flotillin-1 (FLOT-1)	17	IDO1	17	IL-14/α-Taxilin	15
Flt3 Ligand	13,14,22	IFNα2	13,14,15,19	IL-15	13,14,16,19,20,21,22
Flt3 (panTyr)	25	IFNα2 (autoantibody)	15	IL-15 (autoantibody)	15
Follistatin (FST)	16,17,20	IFNβ	14,15	IL-16	14,19,22,23
Follistatin-like Protein 1 (FSTL1)	16,20,21	IFNβ (autoantibody)	15	IL-17A/CTLA8	13,14,19,20,21,22
Fractalkine/CX3CL1	13,14,16,19,21,22	IFNβ1	19	IL-17A/CTLA8 (autoantibody)	15
FSH	16,19,20,21,23	IFNγ	13,14,15,19,20,21,22	IL-17A/F	19
Fyn (Tyr420)	25	IFNγ (autoantibody)	15	IL-17E/IL-25	14,19
<b>G</b>		IFNγ Receptor 1 (IFNGR1)	15	IL-17F	13,14,15,19
Galectin-1	17,20	IFNε	15	IL-17F (autoantibody)	15
Galectin-1 (GAL1) (autoantibody)	17	IFNω	14,15	IL-18	13,14,15,16,19,21,22
Galectin-3	17,20	IFNω (autoantibody)	15	IL-18 (autoantibody)	15
Galectin-3 (GAL3) (autoantibody)	17	IgA	16,20	IL-18BPα	15
GAPDH (total)	17,26	IgE	16,20	IL-19	15
G-CSF	13,14,15,17,19,20,21,22	IGF-1	16	IL-20	14,19,23
G-CSF (autoantibody)	15	IGF-2	16	IL-21	13,14,19,22,23
GDF-11	16	IGF1R (total)	24	IL-22	13,14,19
GDF15	16,17	IGF1R (panTyr)	25	IL-22 (autoantibody)	15
GDNF	18	IGF1R (Tyr1135/1136)	24	IL-23	13,14,19,23
GH	16,19,20,21,23	IGFBP1	16	IL-24	14,15
Ghrelin (active)	13,16,19,20,21,23	IGFBP2	16	IL-27	14,19
GIP (total)	13,16,19,20,21,23	IGF2BP2/IMP2 (autoantibody)	17	IL-28A/IFNλ2	14,15,19,23
GITR	17,20	IGFBP3	16	IL-28B/IFNλ3	15,19
GITRL	17	IGF2BP3/IMP3 (autoantibody)	17	IL-29/IFNλ1	14,15
Glial Fibrillary Acidic Protein (GFAP)	18	IGFBP4	16	IL-31	14,19
GLP-1 (active)	16,19,20,21,23	IGFBP5	16	IL-32α	15
GLP-1 (total)	13,16,20,21	IGFBP6	16	IL-33/NF-HEV (mature)	13,14,19,23
Glucagon	13,16,19,20,21,23	IGFBP7	16	IL-34	14,15
GM-CSF	13,14,15,19,21,22	IgG1	16,20	IL-35	14,15
GnRH	16,20	IgG2	16	IL-36β/IL-1F8	15
GOT1	22	IgG2a	20	IL-36Ra/IL-1F5	22
GP130 (soluble)	15,19	IgG2b	20	IL-37/IL-1F7	15
Granulysin	17	IgG3	16,20	IL-38/IL-1F10	15
Granzyme A	13,14,19	IgG4	16	Insulin	13,16,17,19,20,21,23
Granzyme B	13,14,15,17,19,20	IgM	16,20	IP-10/CXCL10	13,14,18,19,21,22
GROα/CXCL1	13,14,19,20,21,22	IkBα (Ser32)	25	IR (total)	24
GSK3α (total)	24	IKKα/β (Ser177/181)	25	IR (Tyr162/1163)	24
GSK3α (Ser21)	24	IL-1α	13,14,15,19,21,22	Irisin	16,20,21
GSK3β (total)	24	IL-1α (autoantibody)	15	IRS1 (Ser636)	24
GSK3β (Ser9)	24	IL-1β	13,14,16,17,19,20,21,22	IRS1 (total)	24
GSTα	18,22	IL-1RI (soluble)	15,19	I-TAC/CXCL11	13,14,15,19
<b>H</b>		IL-1RII (soluble)	15,19	<b>J</b>	
H2AX (Ser139)	24	IL-1Ra	13,14,19,22	Jag1	16,20
Haptoglobin	16,20,21,22	IL-2	13,14,19,21,22	JNK/SAPK1 (Thr183/Tyr185)	24,25,26
HB-EGF	13,17	IL-2 (autoantibody)	15	JNK/SAPK1 (total)	25,26
HCC-1/CCL14	15	IL-2Ra (soluble)	15,17,19,20	Jo-1 (autoantibody)	15

# MILLIPLEX® Analyte Index (continued)

Analyte	Page No.	Analyte	Page No.	Analyte	Page No.
<b>K</b>		mTOR (Ser2448) .....	24,26	Periostin .....	17
Kallikrein-6 .....	17,18	mTOR (total) .....	24,26	Progranulin (pGRN) .....	17
KC-like Protein .....	22	Mucin-1 (MUC1) (autoantibody) .....	17	PL-12 (Alanyl-tRNA Synthetase) (autoantibody) .....	15
KC/GRO/CINC-1/CXCL1 .....	19,20,21,22	Myeloperoxidase (MPO) .....	16,17,18	Placental Growth Factor 2 .....	20
KIM-1 .....	18,21,22,23	Myeloperoxidase (MPO) (autoantibody) .....	15	Placental Growth Factor (PIGF) ..	13,16,17
Ku (autoantibody) .....	15	Myoglobin .....	16	Platelet Factor 4 (PF4)/CXCL4 .....	16
<b>L</b>		Myosin Light Chain 3 (MYL3) .....	21	PF4 (autoantibody) .....	15
Lactotransferrin (LTF) .....	15	Myostatin/GDF8 .....	13,16,20,21	PM/Scl 100 (autoantibody) .....	15
LAG-3 .....	17,20	<b>N</b>		Progesterone .....	23
LAT (panTyr) .....	26	NAP-2/CXCL7 .....	15	Prolactin .....	17,20,21,23
Lck (panTyr) .....	26	NCAM (soluble) .....	18	ProMMP-9 .....	19,20
Lck (Tyr394) .....	25	NCAM1/L1CAM/CD171 .....	17	Properdin .....	15
Leptin .....	13,16,17,19,20,21,23	Nectin-2 .....	17	Proteinase 3 (autoantibody) .....	15
Leucine-rich alpha-2-glycoprotein 1 (LRG1) .....	17	Nectin-4 .....	17	PSA (free) .....	17
Leukemia Inhibitory Factor (LIF) .....	13,14,16,19,20,21,23	Neurogranin (NRGN) .....	18	PSA (total) .....	17
LH .....	16,19,20,21,23	Neuron-specific Enolase (NSE) .....	17,18	P-Selectin (soluble) .....	16,20
LIGHT .....	16,20	Neuropilin-1 (soluble) .....	17	PTEN (total) .....	24
LIX/CXCL5 .....	19,21	Neurotensin .....	18,21	PTEN (Ser380) .....	24
L-Selectin (soluble) .....	16	Neutrophil Elastase-2 (ELA2) .....	15	PTH .....	17,18,21
Lymphotactin/XCL1 .....	14,15	NFκB (total) .....	25	PVR/CD155 .....	17
Lyn (Tyr397) .....	25	NFκB (Ser536) .....	25	PYY (total) .....	13,16,19,20,21,22
<b>M</b>		NGAL/Lipocalin-2 .....	15,16,18,21,22,23	<b>R</b>	
Mannose-Binding Lectin (MBL) .....	15	NGF .....	13,16	RAGE (soluble) .....	15,18,19
MCAM/MUC18/sCD146 .....	17	Notch1 .....	20	RANKL .....	17
Mcl-1/BIM (interaction) .....	24	NOXA/Mcl-1 (interaction) .....	24	RANTES/CCL5 .....	13,14,18,19,21,22
Mcl-1 (total) .....	24	NT-proBNP .....	13,16	Ras (total) .....	25
MCP-1/CCL2 .....	13,14,16,19,20,21,22,23	<b>O</b>		RasG12D (total) .....	25
MCP-2/CCL8 .....	13,14,23	Oncostatin-M (OSM) .....	16,20	RasG12V (total) .....	25
MCP-3/CCL7 .....	13,14	Osteoactivin .....	18	RBP4 .....	18,23
MCP-4/CCL13 .....	13,14,23	Osteocalcin (OC) .....	13,17	Renin .....	18,21
MCP-5/CCL12 .....	19	Osteonectin (OSTN)/Musclin .....	16,20,21	Resistin .....	15,16,20
M-CSF .....	13,14,15,19,22	Osteonectin/SPARC .....	13,16,17,20,21	Ribosomal P (autoantibody) .....	15
M-CSFR (panTyr) .....	25	Osteopontin (OPN) .....	13,17,18,21,22,23	RNP (autoantibody) .....	15
MDC/CCL22 .....	13,14,19	Osteopontin (OPN) (autoantibody) .....	15	RNP/Sm (autoantibody) .....	15
MDH1 .....	18	Osteoprotegerin (OPG) .....	13,17,21	RPS6 (Ser235/Ser236) .....	24
MDM2 (total) .....	24	OX40/CD134 .....	17	RPS6 (total) .....	24
MEK1 (Ser222) .....	24,25	Oxytocin .....	18,21	<b>S</b>	
Melanoma Inhibitory Activity Protein (MIA) .....	17	<b>P</b>		S100B .....	18
Melatonin .....	18,21	P16-INK4a (autoantibody) .....	17	SARS-CoV-2 N .....	16
Mesothelin .....	17	p21 (total) .....	24	SARS-CoV-2 RBD .....	16
Mi-2 (autoantibody) .....	15	p38/SAPK2A/B (Thr180/Tyr182) .....	24,25,26	SARS-CoV-2 Spike S1 .....	16
MICA .....	17	p38/SAPK2A/B (total) .....	25,26	SARS-CoV-2 Spike S2 .....	16
MICB .....	17	p53 (autoantibody) .....	17	SCF .....	13,14,17,22,23
Midkine .....	17	p53 (Ser15) .....	24	Scl-70 (autoantibody) .....	15
MIF .....	15,17	p53 (Ser46) .....	24	Sclerostin (SOST) .....	13,17,21
MIG/CXCL9 .....	13,14,15,19	p70S6 Kinase (total) .....	24,25	SDF-1/CXCL12 .....	13,14,20,22,23
MIP-1α/CCL3 .....	13,14,15,19,20,21,22	p70S6 Kinase (Thr389/412) .....	24,25	SDH .....	18,22
MIP-1β/CCL4 .....	13,14,15,19,22	PAI-1 (total) .....	15,16,18,20,21	Secretin .....	16,20,21
MIP-1δ/MIP-5/CCL15 .....	13,14,23	Pancreatic Polypeptide (PP) .....	13,16,19,20,21,23	Serum Amyloid A (SAA) .....	16
MIP-2/CXCL2 .....	19,21	PARK5/UCHL1 .....	18	Serum Amyloid P (SAP) .....	16,18,20
MIP-3α/CCL20 .....	13,14,15,19,22	PARK7/DJ1 .....	18	Sex Hormone Binding Globulin (SHBG) .....	17
MIP-3β/CCL19 .....	13,14,15,19	PCNA (autoantibody) .....	15	Siglec-7 .....	17
MIP-4/PARC/CCL18 .....	15,18	PD-1 .....	17,20	Siglec-9 .....	17
MMP-1 .....	13,15	PDGF-AA .....	13,14,18	Sm (autoantibody) .....	15
MMP-2 .....	13,15,19,20	PDGF-AB/BB .....	14,17,18	SMAD2 (Ser465/467) .....	26
MMP-3 .....	13,15,19,20	PDGF-BB .....	13,22	SMAD3 (Ser423/425) .....	26
MMP-7 .....	13,15	PDGFRα (panTyr) .....	25	SMAD4 (total) .....	26
MMP-8 .....	15,19,20	PDGFRβ (panTyr) .....	25	SOX2 (autoantibody) .....	17
MMP-9 .....	13,15	PD-L1 .....	17,20	Src (Tyr419) .....	25
MMP-10 .....	13,15	PD-L2 .....	17,20	SSA/Ro52 (autoantibody) .....	15
MMP-12 .....	13,15,19,20	PEDF .....	18	SSA/Ro60 (autoantibody) .....	15
MMP-13 .....	15	Pentraxin-3 (PTX3) .....	16	SSB/La (autoantibody) .....	15
MPIF/CCL23 .....	14,15	Perforin .....	13,14,17,19	STAT1 (Tyr701) .....	24,25
MSK1 (Ser212) .....	24			STAT2 (Tyr690) .....	25

# MILLIPLEX® Analyte Index (continued)

Analyte	Page No.	Analyte	Page No.	Analyte	Page No.
STAT3 (Ser727).....	25	Thrombospondin-2 (TSP-2) .....	17	TSLP.....	13,14,23
STAT3 (Tyr705).....	25,26	TIE1 (panTyr) .....	25	TWEAK .....	17
STAT5A/B (total).....	25	TIE2 (panTyr) .....	25	<b>U</b>	
STAT5A/B (Tyr694/699).....	25	Tie-2 (soluble) .....	17	ucMGP .....	17
STAT6 (Tyr641).....	25	TIM-3 .....	17,20	uPAR (soluble)/CD87 .....	17
Substance P .....	18,21	TIMP-1 .....	15,18,21,22	Uromodulin .....	18
Superoxide Dismutase 1 (soluble) (sSOD1) .....	18	TIMP-2.....	15	Uteroglobin .....	15
Superoxide Dismutase 2 (soluble) (sSOD2) .....	18	TIMP-3.....	15	<b>V</b>	
Survivin/BIRC5 (autoantibody) .....	17	TIMP-4 .....	15	VCAM-1 (soluble) .....	15,16,18
Syntenin-1 (Syn-1).....	17	Tissue Factor (TF).....	16	VEGF .....	21,22
Syk (panTyr).....	26	TLR-2 .....	17,20	VEGF-A .....	13,14,17,19,20,21,22
<b>T</b>		TNFR1 (total) .....	25	VEGF-C.....	13,17,20
T3 .....	21,23	TNFa .....	13,14,15,16,17,19,20,21,22	VEGF-D.....	13,17,20
T4 .....	21,23	TNFa (autoantibody).....	15	VEGFR1/Flt-1 (panTyr) .....	25
TARC/CCL17 .....	13,14,19,23	TNFβ/Lymphotoxin-α (LTA).....	13,14,19	VEGFR1/Flt-1 (soluble).....	15,17,19
Tau (Total) .....	18	TNF RI (soluble) (sTNFR1) .....	15,19	VEGFR2/KDR/Flk-1 (panTyr).....	25
Tau (Thr181) .....	18	TNF RII (soluble) (sTNFR2).....	15,19	VEGFR2/KDR/Flk-1 (soluble).....	15,17,19
TFF-3.....	18,23	TPO .....	13,14,23	VEGFR2/KDR/Flk-1 (soluble).....	15,17,19
TGFα .....	13,14,17,19	TRAIL/TNFSF10 .....	13,14,17,23	VEGFR3/Flt-4 (panTyr).....	25
TGFβ1.....	23	Transglutaminase 2 (TGM2) .....	17,18	VEGFR3/Flt-4 (soluble) .....	15,17,19
TGFβ2.....	23	TRAP5 .....	17	<b>Y</b>	
TGFβ3.....	23	TREM2 .....	18	Yes (Tyr421) .....	25
TGFβRII (total) .....	26	Troponin I (TnI) .....	13,16,20,21	YKL40/CHI3L1 .....	15,17
Thrombomodulin.....	16,20	Troponin T (TnT) .....	16,20,21	<b>Z</b>	
Thrombospondin-1 (TSP-1) .....	15	TSC2 (total) .....	24	ZAP-70 (panTyr).....	26
		TSC2 (Ser939).....	24		
		TSG101.....	17		
		TSH.....	16,19,20,21,23		

**Analytes in blue font:** available in Screening and Qualified assays. **Analytes in black font:** available in Qualified assays only. Human pp. 13-18; Non-Human Primate p. 19; Mouse pp. 19-21; Rat pp. 21-22; Other/Multi-Species pp. 22-23; Cell Signaling kits pp. 24-26

## Multiplex Your Research

Explore all the ways researchers are using MILLIPLEX® multiplex assays at [SigmaAldrich.com/milliplex-learn](http://SigmaAldrich.com/milliplex-learn)



## What's In A Typical MILLIPLEX® Kit?





# MILLIPLEX® PLEXpedition Screening Assays

## HUMAN

### Multiple Research Areas

#### Human Screening Assay

(Cat. No. HPLX1-115SP)

80 (Cat. No. HPLX1-115SP-PX80) ♦

115 (Cat. No. HPLX1-115SP-PX)

xMAP® INTELLIFLEX® or FLEXMAP 3D® Instrument						
Luminex® 200™ Instrument						
MAGPIX® Instrument						
EGF ♦	IL-2 ♦	MCP-1 ♦	ACTH ♦	M-CSF ♦	Amylin (Active)	MCP-2
FGF-2 ♦	IL-4 ♦	MIG ♦	BDNF ♦	MCP-3 ♦	BCA-1	MCP-4
Fractalkine ♦	IL-5 ♦	MIP-1α ♦	C-Peptide ♦	MDC ♦	BNP	MIP-16
G-CSF ♦	IL-6 ♦	MIP-1β ♦	Eotaxin ♦	MIP-3α ♦	CK-MB	MIP-3β
Ghrelin (Active) ♦	IL-7 ♦	OPN ♦	FABP4 ♦	MMP-1 ♦	GCP-2	MMP-3
GIP ♦	IL-8 ♦	PDGF-AA ♦	FLT3 Ligand ♦	MMP-2 ♦	DKK1	MMP-10
Glucagon ♦	IL-10 ♦	PDGF-AB/BB ♦	GLP-1 Total ♦	MMP-7 ♦	ENA-78	MMP-12
GM-CSF ♦	IL-12 (p40) ♦	Perforin ♦	Granzyme A ♦	MMP-9 ♦	Eotaxin-2	Myostatin
Granzyme B ♦	IL-12 (p70) ♦	RANTES ♦	I-TAC ♦	OPG ♦	Eotaxin-3	NGF
GROα ♦	IL-13 ♦	sCD40L ♦	IL-3 ♦	PIGF ♦	Erythropoietin (EPO)	NTproBNP
HGF ♦	IL-15 ♦	SCF ♦	IL-9 ♦	PP ♦	FABP3	Osteocalcin
IFNα2 ♦	IL-17A ♦	sFAS ♦	IL-17F ♦	PYY ♦	FGF-21	Osteonectin
IFNγ ♦	IL-18 ♦	sFASL ♦	IL-21 ♦	TARC ♦	FGF-23	SDF-1
IL-1α ♦	IL-22 ♦	TGFα ♦	IL-33 ♦	TNFβ ♦	HB-EGF	SOST
IL-1β ♦	IL-23 ♦	TNFα ♦	Insulin ♦	Troponin I ♦	I-309	TPO
IL-1Ra ♦	IP-10 ♦	TRAIL ♦			IL-11	TSLP
	Leptin ♦	VEGF-A ♦			LIF	VEGF-C
						VEGF-D

### Configure Your Multiplex Kits with Ease

Check out our enhanced kit configurator where you can select your analytes for MILLIPLEX® qualified assays as well as our new MILLIPLEX® PLEXpedition screening kits. Design your kit at [SigmaAldrich.com/milliplex-order](https://SigmaAldrich.com/milliplex-order)



# MILLIPLEX® Qualified Assays

## HUMAN

### Immunology

#### Human Cytokine/Chemokine/ Growth Factor Panel A

☐ (Cat. No. HCYTA-60K)

38 (Cat. No. HCYTA-60K-PX38) ♦

38 (Cat. No. HCYTA-60K-PXBK38) ♦

48 (Cat. No. HCYTA-60K-PX48)

48 (Cat. No. HCYTA-60K-PXBK48)

sCD40L	IL-13 ♦
EGF ♦	IL-15 ♦
Eotaxin/CCL11 ♦	IL-17A/CTLA8 ♦
FGF-2/FGF-basic	IL-17E/IL-25 ♦
Flt3 Ligand	IL-17F ♦
Fractalkine/CX3CL1	IL-18 ♦
G-CSF ♦	IL-22 ♦
GM-CSF ♦	IL-27
GROα	IP-10/CXCL10 ♦
IFNα2 ♦	MCP-1/CCL2 ♦
IFNγ ♦	MCP-3/CCL7
IL-1α ♦	M-CSF ♦
IL-1β ♦	MDC/CCL22
IL-1RA ♦	MIG/CXCL9 ♦
IL-2 ♦	MIP-1α/CCL3 ♦
IL-3 ♦	MIP-1β/CCL4 ♦
IL-4 ♦	PDGF-AA ♦
IL-5 ♦	PDGF-AB/BB ♦
IL-6 ♦	RANTES/CCL5 ♦▲*
IL-7 ♦	TGFα
IL-8/CXCL8 ♦	TNFα ♦
IL-9	TNFβ/Lymphotoxin-α (LTA) ♦
IL-10 ♦	VEGF-A ♦
IL-12 (p40) ♦	
IL-12 (p70) ♦	

**Get both Human Panel A and Panel B premixed kits with one catalog number!**

**76-Plex (Two 38-plex premixed kits)**

Cat. No. HCYTPAB-76SK

**96-Plex (Two 48-plex premixed kits)**

Cat. No. HCYTPAB-96SK

Kits cannot be combined.

#### Human Cytokine/Chemokine/ Growth Factor Panel B

☐ (Cat. No. HCYTB-60K)

38 (Cat. No. HCYTB-60K-PX38) ♦

38 (Cat. No. HCYTB-60K-PXBK38) ♦

48 (Cat. No. HCYTB-60K-PX48)

48 (Cat. No. HCYTB-60K-PXBK48)

6Ckine/CCL21 ♦	IL-28A/IFNλ2 ♦
APRIL ♦	IL-29 /IFNλ1 ♦
BAFF/Blys ♦	IL-31 ♦
BCA-1/CXCL13 ♦	IL-33/NF-HEV (mature) ♦
CCL28	IL-34
sCD137/4-1BB/ TNFRSF9 ♦	IL-35
CTACK/CCL27 ♦	IFNβ ♦
CXCL6/GCP-2	IFNω ♦
CXCL16	I-TAC/CXCL11 ♦
ENA-78/CXCL5 ♦	LIF ♦
Eotaxin-2/CCL24/ MPIF-2 ♦	Lymphotoxin/XCL1
Eotaxin-3/CCL26 ♦	MCP-2/CCL8 ♦
sFAS/TNFRSF6 ♦	MCP-4/CCL13 ♦
sFASL ♦	MIP-1δ /MIP-5/ CCL15 ♦
Granzyme A ♦	MIP-3α/CCL20 ♦
Granzyme B ♦	MIP-3β/CCL19
HMGB1 ♦	MPIF-1/CCL23
I-309/CCL1 ♦	Perforin ♦
IL-11	SCF ♦
IL-16 ♦	SDF-1/CXCL12 ♦
IL-20 ♦	TARC/CCL17 ♦
IL-21 ♦	TPO ♦
IL-23 ♦	TRAIL/TNFSF10 ♦
IL-24	TSLP ♦

#### Human High Sensitivity T Cell

☐ (Cat. No. HSTCMAG-28SK)

15 (Cat. No. HSTCMAG28SPMX13) ♦

15 (Bulk Cat. No. HSTCMAG28SPMX13BK) ♦

21 (Cat. No. HSTCMAG28SPMX21)

21 (Bulk Cat. No. HSTCMAG28SPMX21BK)

Fractalkine/CX3CL1	IL-12 (p70) ♦
GM-CSF ♦	IL-13 ♦
IFNγ ♦	IL-17A/CTLA8
IL-1β ♦	IL-21
IL-2 ♦	IL-23
IL-4 ♦	I-TAC/CXCL11
IL-5 ♦	MIP-1α/CCL3
IL-6 ♦	MIP-1β/CCL4
IL-7 ♦	MIP-3α/CCL20
IL-8/CXCL8 ♦	TNFα ♦
IL-10 ♦	

#### 384-Well Human High Sensitivity T Cell

(Cat. No. HSTC384-28K)

21 (Cat. No. HSTCMAG384-PX21)

21 (Bulk Cat. No. HSTCMAG384PX21BK)

Fractalkine/CX3CL1	IL-12 (p70)
GM-CSF	IL-13
IFNγ	IL-17A/CTLA8
IL-1β	IL-21
IL-2	IL-23
IL-4	I-TAC/CXCL11
IL-5	MIP-1α/CCL3
IL-6	MIP-1β/CCL4
IL-7	MIP-3α/CCL20
IL-8/CXCL8	TNFα
IL-10	

#### Human Th17

(Cat. No. HTH17MAG-14K)

25 (Cat. No. HT17MG-14K-PX25)

25 (Bulk Cat. No. HT17MAG14PMX25BK)

GM-CSF	IL-17E/IL-25
IFNγ	IL-17F
IL-1β	IL-21
IL-2	IL-22
IL-4	IL-23
IL-5	IL-27
IL-6	IL-28A/IFNλ2
IL-9	IL-31
IL-10	IL-33/NF-HEV (mature)
IL-12 (p70)	MIP-3α/CCL20
IL-13	TNFα
IL-15	TNFβ/Lymphotoxin-α (LTA)
IL-17A/CTLA8	

#### Human CD8+ T Cell

☐ (Cat. No. HCD8MAG-15K)

17 (Cat. No. HCD8MAG15K17PMX)

17 (Bulk Cat. No. HCD8MAG15KPX17BK)

sCD137/4-1BB/ TNFRSF9	IL-4
sFAS/TNFRSF6	IL-5
sFasL	IL-6
GM-CSF	IL-10
Granzyme A	IL-13
Granzyme B	MIP-1α/CCL3
IFNγ	MIP-1β/CCL4
IL-2	Perforin
	TNFα

## MILLIPLEX® Immunology Kits

Profile more immune biomarkers faster with MILLIPLEX® multiplex immunoassays. Learn more at [SigmaAldrich.com/milliplex-immunology](http://SigmaAldrich.com/milliplex-immunology)



### Legend key for MILLIPLEX® kits

† Analytes which cannot be plexed together:  
– Active and total  
– Free and total

♦ Available in Cat. No. listed

▼ Premix panel only

Bulk indicates Space Saver Packaging

▲ These analytes cannot be plexed with other analytes in this panel in serum/plasma

♦ Requires a protease inhibitor during sample collection

■ Requires sample extraction

\*\* No standard/QC; antibody levels are reported as MFIs (Median Fluorescence Intensities)

● Serum/Plasma only

★ Tissue Culture samples only

^ Competitive assay format

☑ Available for custom premix

° Analyte requires a different sample dilution from others in panel

○ Analyte cannot be measured in serum

# Requires sample acidification

§ Analyte cannot be measured in plasma

u Urine only

**Human Interferon**

(Cat. No. HIFN-130K)

9 (Cat. No. HIFN-130K-PMX9)

IFN $\alpha$ 2	IFN $\epsilon$
IFN $\beta$	IFN $\omega$
IFN $\gamma$	IL-28A/IFN $\lambda$ 2
IFN $\gamma$ Receptor 1 (IFNGR1)	IL-28B/IFN $\lambda$ 3 IL-29/IFN $\lambda$ 1

**Human Soluble Cytokine Receptor**

(Cat. No. HSCRMAG-32K)

14 (Cat. No. HSCRMAG32KPX14)

14 (Bulk Cat. No. HSCRMAG32PMX14BK)

sCD30	sIL-6R
sEGFR/sHER1/ErbB1	sRAGE
sGP130	sTNF RI
sIL-1RI	sTNF RII
sIL-1RII	sVEGFR1/sFlt-1
sIL-2Ra	sVEGFR2/sKDR/sFlk-1
sIL-4R	sVEGFR3/sFlt-4

**Human Cytokine/Chemokine Panel III**

(Cat. No. HCYP3MAG-63K)

HCC-1/CCL14▲	M-CSF
IL-11	MIG/CXCL9
IL-29/IFN $\lambda$ 1	MIP-3 $\alpha$ /CCL20
I-TAC/CXCL11	MIP-3 $\beta$ /CCL19
CXCL6/GCP-2	NAP-2/CXCL7▲
Lymphotactin/XCL1	

**Human Cytokine/Chemokine Panel IV**

10 (Cat. No. HCYP4MAG-64K)

20 (Cat. No. HCY4MG-64K-PX20)

20 (Bulk Cat. No. HCP4MG64KPX20BK)

BAFF/Blys	IL-28B/IFN $\lambda$ 3
BRAK/CXCL14	IL-32 $\alpha$
CCL28	IL-34
CXCL16	IL-35
HCC-4/CCL16	IL-36 $\beta$ /IL-1F8
HMGB1●	IL-37/IL-1F7
IFN $\beta$	IL-38/IL-1F10
IL-14/ $\alpha$ -Taxilin	MIP-4/PARC/CCL18
IL-19	MPIF/CCL23
IL-24	YKL40/CHI3L1

**Human IL-18 Singleplex**

(Cat. No. HIL18MAG-66K)

IL-18

**Human Complement Expanded Panel 1**

10 (Cat. No. HCMPEX1-19K)

Adipsin/Factor D	C9
C2	Factor I
C4b	Mannose-Binding Lectin (MBL)
C5	Properdin
C5a	

**Human Complement Panel 2**

10 (Cat. No. HCMPEX2MAG-19K)

C1q	C4
C3	Factor B
C3b	Factor H

**Human Complement C5b-9 Singleplex**

(Cat. No. HC5B9-140K)

C5b-9

**Human MMP Panel 1**

(Cat. No. HMMPM1MAG-55K)

MMP-3	MMP-13
MMP-12	

**Human MMP Panel 2**

(Cat. No. HMMPM2MAG-55K)

MMP-1	MMP-9
MMP-2	MMP-10
MMP-7	

**Human TIMP Panel 1 (Serum/Plasma samples)**

(Cat. No. HTMP1MAG-54K)

TIMP-1	TIMP-2
--------	--------

**Human TIMP Panel 2 (Cell culture samples)**

(Cat. No. HTMP2MAG-54K)

TIMP-1	TIMP-3
TIMP-2	TIMP-4

**Human Fibrosis Panel 1**

(Cat. No. HFIB1-100K)

COMP	Uteroglobin
IL-18BPa	

**Immune Response****Human Autoimmune Autoantibody\*\***

(Cat. No. HAIAB-10K)

QUALITATIVE KIT

$\beta$ 2-Glycoprotein	PM/Scl 100
C1q	Proteinase 3
CENP-A	Ribosomal P
CENP-B	RNP
Jo-1	RNP/Sm
Ku	Scl-70
Mi-2	Sm
Myeloperoxidase (MPO)	SSA/Ro52
PCNA	SSA/Ro60
PL-12 (Alanyl-tRNA Synthetase)	SSB/La

**Human Cytokine Autoantibody Expanded IgG, IgA, and IgM\*\***

IgG (Cat. No. HCYTABG-17K)

IgA (Cat. No. HCYTABA-17K)

IgM (Cat. No. HCYTABM-17K)

QUALITATIVE KIT

BAFF/Blys	IL-8/CXCL8
G-CSF	IL-10
GM-CSF	IL-12 (p40)
IFN $\alpha$ 2	IL-15
IFN $\beta$	IL-17A/CTLA8
IFN $\gamma$	IL-17F
IFN $\omega$	IL-18
IL-1 $\alpha$	IL-22
IL-2	Osteopontin
IL-3	PF4
IL-4	TNFA
IL-6	

**Human Sepsis Panel 1**

(Cat. No. HSP1MAG-63K)

sFAS/TNFRSF6	MIF
sFasL	PAI-1 (total)
sICAM-1	sVCAM-1

**Human Sepsis Panel 2**

(Cat. No. HSP2MAG-63K)

Granzyme B	MIP-1 $\alpha$ /CCL3
HSP70	MIP-1 $\beta$ /CCL4
IL-1 $\alpha$	MMP-8
IL-8/CXCL8	

**Human Sepsis Panel 3**

(Cat. No. HSP3MAG-63K)

Lactotransferrin (LTF)	Resistin
Neutrophil Elastase-2 (ELA2)	Thrombospondin-1 (TSP-1)
NGAL/Lipocalin-2	

**MILLIPLEX® Autoantibody Profiling**Discover the benefits of multiplexing autoantibodies at  
[SigmaAldrich.com/milliplex-autoab](https://SigmaAldrich.com/milliplex-autoab)

## Human Immunoglobulin Isotyping

☑ (Cat. No. HGAMMAG-301K)

IgA	IgG3
IgG1	IgG4
IgG2	IgM

## Human IgE – Singleplex

(Cat. No. HGAMMAG-303E)

IgE
-----

## Virology

### SARS-CoV-2 Antigen Panel 1 IgA\*\*

(Cat. No. HC19SERA1-85K)

QUALITATIVE KIT

SARS-CoV-2 N	SARS-CoV-2 Spike S1
SARS-CoV-2 RBD	SARS-CoV-2 Spike S2

### SARS-CoV-2 Antigen Panel 1 IgG\*\*

(Cat. No. HC19SERG1-85K)

QUALITATIVE KIT

SARS-CoV-2 N	SARS-CoV-2 Spike S1
SARS-CoV-2 RBD	SARS-CoV-2 Spike S2

### SARS-CoV-2 Antigen Panel 1 IgM\*\*

(Cat. No. HC19SERM1-85K)

QUALITATIVE KIT

SARS-CoV-2 N	SARS-CoV-2 Spike S1
SARS-CoV-2 RBD	SARS-CoV-2 Spike S2

For Research Use Only. Not For Use In Diagnostic Procedures.

## Metabolism/Endocrinology

### Human Adipokine Panel 1 (Serum/Plasma samples)

(Cat. No. HADK1MAG-61K)

Adiponectin	PAI-1 (total)
Adipsin/Factor D	Resistin
NGAL/Lipocalin-2	

### Human Adipokine Panel 2 (Serum/Plasma samples)

(Cat. No. HADK2MAG-61K)

IL-1β	Leptin
IL-6	MCP-1/CCL2
IL-8/CXCL8	NGF
Insulin	TNFα

## Human Adipocyte (Cell culture samples)

(Cat. No. HADCYMAG-61K)

Adiponectin	MCP-1/CCL2
HGF	NGF
IL-1β	PAI-1 (total)
IL-6	Resistin
IL-8/CXCL8	TNFα
Leptin	

## Human Metabolic Hormone V3

(Cat. No. HMH3-34K)

Amylin (active) †	Insulin
Amylin (total) †	Leptin
C-Peptide	MCP-1/CCL2
Ghrelin (active) †	Pancreatic Polypeptide (PP)
GIP (total)	PYY (total)
GLP-1 (active) †	Secretin
GLP-1 (total) †	TNFα
Glucagon †	
IL-6	

## Human Myokine

(Cat. No. HMYOMAG-56K)

Apelin	IL-15
BDNF	Irisin
Erythropoietin (EPO)	LIF
FABP3	Myostatin/GDF8
FGF-21	Oncostatin-M (OSM)
Fractalkine/CX3CL1	Osteocrin (OSTN)/Musclin
FSTL1	Osteonectin/SPARC
IL-6	

## Human Aging Panel 1

(Cat. No. HAGE1MAG-20K)

CTACK/CCL27	IL-6
FGF-21	IL-10*
GDF-11	IL-18
GDF15	Jag1
GnRH	Leptin

## Human Liver Protein

(Cat. No. HLPMPAG-57K)

α-Fetoprotein (AFP)	FGF-19
ANGPTL3	FGF-21
ANGPTL4	FGF-23
ANGPTL6	HGF
FABP1	

## Human IGF Binding Protein †

(Cat. No. HIGFBMAG-53K)

IGFBP1	IGFBP5
IGFBP2	IGFBP6
IGFBP3 <sup>†</sup>	IGFBP7
IGFBP4	

## Human IGF ■

(Cat. No. HIGFMAG-52K)

IGF-1	IGF-2
-------	-------

## Human Pituitary Panel 1

(Cat. No. HPTP1MAG-66K)

ACTH	FSH
Agouti-Related Protein (AgRP)	GH
CNTF	LH
	TSH

## Cardiovascular

### Human CVD Panel 1

(Cat. No. HCVD1MAG-67K)

BNP	LIGHT
CK-MB	NT proBNP
CXCL6/GCP-2	Oncostatin-M (OSM)
CXCL16	Placental Growth Factor (PIGF)
Endocan-1 (ESM-1)	Troponin I (TnI)
FABP3	
FABP4	

### Human CVD Panel 2

(Cat. No. HCVD2MAG-67K)

ADAMTS13	Myoglobin
D-dimer <sup>5</sup>	NGAL/Lipocalin-2
GDF15	sP-Selectin
sICAM-1	Serum Amyloid A
Myeloperoxidase (MPO)	sVCAM-1

### Human CVD Panel 3 (Acute Phase)

(Cat. No. HCVD3MAG-67K)

α-1-Acid Glycoprotein (AGP)	Haptoglobin
α-2-Macroglobulin	sL-Selectin
Adipsin/Factor D	Platelet Factor 4 (PF4)/CXCL4
CRP	Serum Amyloid P (SAP)
Fetuin A	
Fibrinogen ⊙	

### Human CVD Panel 4

(Cat. No. HCVD4MAG-67K)

sCD31/sPECAM-1	Thrombomodulin
sE-Selectin	Tissue Factor (TF)
Follistatin (FST)	Troponin T (TnT)
Pentraxin-3 (PTX3)	

### Legend key for MILLIPLEX® kits

- † Analytes which cannot be plexed together:
  - Active and total
  - Free and total
- ◆ Available in Cat. No. listed
- ▼ Premix panel only
- Bulk indicates Space Saver Packaging
- ▲ These analytes cannot be plexed with other analytes in this panel in serum/plasma

- ▶ Requires a protease inhibitor during sample collection
- Requires sample extraction
- \*\* No standard/QC; antibody levels are reported as MFIs (Median Fluorescence Intensities)
- Serum/Plasma only
- ★ Tissue Culture samples only

- ^ Competitive assay format
- ☑ Available for custom premix
- Analyte requires a different sample dilution from others in panel
- ⊙ Analyte cannot be measured in serum
- # Requires sample acidification
- <sup>5</sup> Analyte cannot be measured in plasma
- <sup>u</sup> Urine only



**Human CVD Panel 6**

(Cat. No. HCVD6MAG-67K)

sCD14	MCAM/MUC18
DPP4	Progranulin (pGRN)
Endostatin	ucMGP
LRG1	

**Human Apolipoprotein**

(Cat. No. APOMAG-62K)

Apo AI	Apo CII
Apo AII	Apo CIII
Apo B	Apo E

**Bone****Human Bone**

(Cat. No. HBNMAG-51K)

ACTH	Osteocalcin (OC)
DKK1	Osteopontin (OPN)
FGF-23	Osteoprotegerin (OPG)
IL-1β	PTH
IL-6	Sclerostin (SOST)
Insulin	TNFA
Leptin	

**Human RANKL – Singleplex**

(Cat. No. HRNKLMAG-51K-01)

RANKL
-------

**Cancer****Human Immuno-Oncology Checkpoint Protein Panel 1**

(Cat. No. HCKP1-11K)

17 (Cat. No. HCKP1-11K-PX17)

17 (Bulk Cat. No. HCKP1-11K-PXBK17)

BTLA	HVEM
CD27	ICOS
CD28	LAG-3
CD40	PD-1
CD80/B7-1	PD-L1
CD86/B7-2	PD-L2
CTLA-4/CD152	TIM-3
GITR	TLR-2
GITRL	

**Human Immuno-Oncology Checkpoint Protein Panel 2**

(Cat. No. HCKP2-11K)

4-1BBL/TNFSF9	FGL1/Hepassocin
5'-NT/CD73	Galectin-1
APRIL	Galectin-3
Arginase-1	Granulysin
B7-H2/ICOSL	Granzyme B
B7-H3/CD276	IDO1
B7-H4/VTCN1	MICA
B7-H5/VISTA	MICB
B7-H6	Nectin-2
BAFF/BLyS	Nectin-4
CD25/IL-2Ra	OX40/CD134
CD30/TNFRSF8	Perforin
CD40L	PVR/CD155
CD137/4-1BB	Siglec-7
CD226/DNAM-1	Siglec-9
E-Cadherin	

**Human Cancer Autoantibody\*\***

(Cat. No. HCABMAG-13K)

**QUALITATIVE KIT**

CCNB1/Cyclin B1	IGF2BP2/IMP2
CTAG1B/NY-ESO-1	IGF2BP3/IMP3
ENO1	Mucin-1 (MUC1)
Galectin-1 (GAL1)	P16-INK4a
Galectin-3 (GAL3)	p53
HER2/ErbB2	SOX2
HIF-1α	Survivin/BIRC5
HSP60	

**Human Exosome Characterization****NEW**

(Cat. No. HEXSM-170K)

9 (Cat. No. HEXSM-170K-PMX)

9 (Bulk Cat. No. HEXSM-170K-BKPMX)

Argonaute-2 (Ago2)*	Flotillin-1 (FLOT-1)
Calreticulin (CALR)	GAPDH
CD9	Syntenin-1 (Syn-1)
CD63	TSG101
CD81	

\*The Ago2 bead is static and will always be included in the kit format.

**Human Circulating Cancer Biomarker Panel 1**

(Cat. No. HCCBP1MAG-58K)

α-Fetoprotein (AFP)	IL-8/CXCL8
CA125	Leptin
CA15-3	MIF
CA19-9	Osteopontin (OPN)
CEA	Prolactin
CYFRA21-1	PSA (free)†
sFAS/TNFRSF6	PSA (total)†
sFasL	SCF
FGF-2/FGF-basic	TGFα
HCGβ	TNFα
HE4	TRAIL/TNFSF10
HGF	VEGF-A
IL-6	

**Human Circulating Cancer Biomarker Panel 3**

(Cat. No. HCCBP3MAG-58K)

Cathepsin D	Melanoma Inhibitory Activity (MIA)
Ferritin	Myeloperoxidase (MPO)
Fibroblast Activation Protein (FAP)	Sex Hormone Binding Globulin (SHBG)
Galectin-3	
IGFBP3	

**Human Circulating Cancer Biomarker Panel 4**

(Cat. No. HCCB4MAG-58K)

ALDH1A1	Kallikrein-6
Carbonic Anhydrase 9 (CA9)	Mesothelin
CD44	Midkine
EpCAM	NCAM1/L1CAM/CD171
Hepsin	Transglutaminase 2 (TGM2)

**Human Cancer/Metastasis Biomarker Panel 1**

(Cat. No. HCMBMAG-22K)

DKK1	Osteoprotegerin (OPG)
GDF15	Periostin
Neuron-specific Enolase (NSE)	TRAP5
Osteonectin/SPARC	TWEAK
	YKL40/CHI3L1

**Human Angiogenesis/Growth Factor Panel 1**

(Cat. No. HAGP1MAG-12K)

Angiopoietin-2	HB-EGF
BMP-9	HGF
EGF	IL-8/CXCL8
Endoglin	Leptin
Endothelin-1	Placental Growth Factor (PIGF)
FGF-1/FGF-acidic	VEGF-A
FGF-2/FGF-basic	VEGF-C
Follistatin (FST)	VEGF-D
G-CSF	

**Human Angiogenesis Panel 2**

(Cat. No. HANG2MAG-12K)

Angiostatin/Kringle sAXL	sIL-6Ra
sCD31/sPECAM-1	sNeuropilin-1 (sNRP-1)
sc-Kit/sStem Cell Factor Receptor (SCFR)	Osteopontin (OPN)
sE-Selectin	PDGF-AB/BB
sEGFR/sHER1/sErbB1	Thrombospondin-2 (TSP-2)
sHER2/sEGFR2/sErbB2	sTIE-2
sHER3/sEGFR3/sErbB3	suPAR
sHGF/sc-Met	sVEGFR1/sFlt-1
	sVEGFR2/sKDR/sFlk-1
	sVEGFR3/sFlt-4

**MILLIPLEX® Cancer Kits**See how our kits are advancing cancer and immuno-oncology research at [SigmaAldrich.com/milliplex-cancer](https://SigmaAldrich.com/milliplex-cancer)

## Neuroscience

### Human Amyloid Beta and Tau (CSF samples)

(Cat. No. HNABTMAG-68K)

Amyloid beta 1-40	pTau (Thr181)
Amyloid beta 1-42	Tau (total)

### Human Neuroscience Panel 1 (CSF samples)

(Cat. No. HNS1MAG-95K)

α-Synuclein	PARK5/UCHL1
Glial Fibrillary Acidic Protein (GFAP)	PARK7/DJ1
Neuron-specific Enolase (NSE)	Transglutaminase 2 (TGM2)

### Human Neuroscience Panel 2

(Cat. No. HNS2MAG-95K)

Angiogenin (ANG) <sup>o</sup>	Ferritin
ApoE4 <sup>†</sup>	Neurogranin (NRGN)
FABP3	TREM2

### Human Neurodegenerative Disease Panel 1

(Cat. No. HNDG1MAG-36K)

α-2-Macroglobulin	Complement Factor C3
Apo AI	Complement Factor H (CFH)
Apo CIII	
Apo E	

### Human Neurodegenerative Disease Panel 2

(Cat. No. HNDG2MAG-36K)

α-1-Antitrypsin (A1AT)	MIP-4/PARC/CCL18
C4	PEDF
CRP	Serum Amyloid P (SAP)

### Human Neurodegenerative Disease Panel 3

(Cat. No. HNDG3MAG-36K)

BDNF	PAI-1 (total)
Cathepsin D	PDGF-AA
sICAM-1	PDGF-AB/BB
Myeloperoxidase (MPO)	RANTES/CCL5
sNCAM	sVCAM-1

### Human Neurodegenerative Disease Panel 4 (CSF samples)

(Cat. No. HNDG4MAG-36K)

Amyloid beta 1-40	sRAGE
Amyloid beta 1-42	S100B
GDNF	

### Human Neurological Disorders Panel 3

(Cat. No. HND3MAG-39K)

Angiotensinogen (AGT)	Osteopontin (OPN)
Contactin-1	Soluble Superoxide Dismutase 1 (sSOD1)
Fetuin A <sup>o</sup>	Soluble Superoxide Dismutase 2 (sSOD2)
Kallikrein-6	

### Human Neuropeptide ■ ^

(Cat. No. HNP MAG-35K)

α-MSH	Oxytocin
β-Endorphin	Substance P
Neurotensin	

### Human Circadian Stress ■ ^

(Cat. No. HNC SMAG-35K)

Cortisol	Melatonin
----------	-----------

## Toxicity

### Human Kidney Injury Panel 1 (Urine samples)

(Cat. No. HKI1MAG-99K)

Calbindin	KIM-1
Collagen IV	Renin
GSTα	TFF-3
IP-10/CXCL10	TIMP-1

### Human Kidney Injury Panel 2 (Urine samples)

(Cat. No. HKI2MAG-99K)

α-1-Microglobulin	EGF
Albumin	NGAL/Lipocalin-2
Clusterin	Osteopontin (OPN)
Cystatin C	

### Human Kidney Injury Panel 4 (Serum/Plasma samples)

(Cat. No. HKI4MAG-99K)

EGF	Osteopontin (OPN)
FABP1	PTH
IP-10/CXCL10	Renin
KIM-1	

### Human Kidney Injury Panel 5 (Serum/Plasma samples)

(Cat. No. HKI5MAG-99K)

α-1-Microglobulin	Osteoactivin
Collagen IV	TIMP-1
NGAL/Lipocalin-2	Uromodulin

### Human Kidney Injury Panel 6 (Serum/Plasma samples)

(Cat. No. HKI6MAG-99K)

β-2-Microglobulin	Cystatin C
Clusterin	RBP4

### Human Liver Injury

(Cat. No. HLINJ MAG-75K)

5'NT/CD73	MDH1
ARG1	SDH
GSTα	

## Explore Biomarkers for Alzheimer's Disease Research

Learn how to combine multiplex and high sensitivity assay analysis for AD biomarker studies at [SigmaAldrich.com/immunoassays-AD](https://www.sigmaaldrich.com/immunoassays-AD)



### Legend key for MILLIPLEX® kits

- † Analytes which cannot be plexed together:
  - Active and total
  - Free and total
- ◆ Available in Cat. No. listed
- ▼ Premix panel only
- Bulk indicates Space Saver Packaging
- ▲ These analytes cannot be plexed with other analytes in this panel in serum/plasma

- ◆ Requires a protease inhibitor during sample collection
- Requires sample extraction
- \*\* No standard/QC; antibody levels are reported as MFIs (Median Fluorescence Intensities)
- Serum/Plasma only
- ★ Tissue Culture samples only

- ^ Competitive assay format
- ⊗ Available for custom premix
- Analyte requires a different sample dilution from others in panel
- ⊙ Analyte cannot be measured in serum
- # Requires sample acidification
- ˆ Analyte cannot be measured in plasma
- u Urine only

# PRIMATE

## Immunology

### Non-Human Primate Cytokine/Chemokine /Growth Factor Panel A

- ☐ (Cat. No. PRCYTA-40K)
- 38 (Cat. No. PRCYTA-40K-PX38)♦
- 38 (Cat. No. PRCYTA-40K-BK38)♦
- 48 (Cat. No. PRCYTA-40K-PX48)
- 48 (Cat. No. PRCYTA-40K-BK48)

BCA-1/CXCL13	IL-15♦
sCD137/4-1BB/ TNFRSF9♦	IL-16
sCD40L♦	IL-17A/CTLA8♦
Eotaxin/CCL11	IL-17E/IL-25
sFASL♦	IL-18♦
FGF-2/FGF-basic	IL-21♦
Fractalkine/CX3CL1	IL-22♦
G-CSF♦	IL-23♦
GM-CSF♦	IL-28A/IFNλ2
Granzyme A♦	IL-31
Granzyme B♦	IL-33/NF-HEV (mature)♦
IFNα2♦	IP-10/CXCL10♦
IFNγ♦	I-TAC/CXCL11♦
IL-1α	MCP-1/CCL2♦
IL-1β♦	MIG/CXCL9♦
IL-1RA♦	MIP-1α/CCL3♦
IL-2♦	MIP-1β/CCL4♦
IL-4♦	MIP-3α/CCL20♦
IL-5♦	Perforin♦
IL-6♦	RANTES/CCL5♦▲*
IL-7♦	TGFα♦
IL-8/CXCL8♦	TNFα♦
IL-10♦	TNFβ/LTA
IL-12 (p70)♦	VEGF-A♦

## Metabolism/ Endocrinology

### Non-Human Primate Metabolic Hormone

(Cat. No. NHPMHMAG-45K)

Amylin (active)▶	Insulin
C-Peptide	Leptin
Ghrelin (active)▶	MCP-1/CCL2
GIP (total)	Pancreatic
GLP-1 (active)▶	Polypeptide (PP)
Glucagon▶	PYY (total)
IL-6	

### Non-Human Primate Pituitary Panel 1

(Cat. No. NHPPT1MG-46K)

ACTH	FSH
Agouti-Related Protein (AgRP)	GH
CNTF	LH
	TSH

# MOUSE

## Immunology

### Mouse Cytokine/Chemokine Panel 1

- ☐ (Cat. No. MCYTOMAG-70K)
- 25 (Cat. No. MCYTOMAG-70K-PMX)♦
- 25 (Bulk Cat. No. MCYTOMAG70PMX25BK)♦
- 32 (Cat. No. MCYTOMAG-70K-PX32)
- 32 (Bulk Cat. No. MCYTOMAG70PMX32BK)

Eotaxin/CCL11	IL-13♦
G-CSF♦	IL-15♦
GM-CSF♦	IL-17A/CTLA8♦
IFNγ♦	IP-10/CXCL10♦
IL-1α♦	KC/GRO/CINC-1/ CXCL1♦
IL-1β♦	LIF
IL-2♦	LIX
IL-3	MCP-1/CCL2♦
IL-4♦	M-CSF
IL-5♦	MIG/CXCL9
IL-6♦	MIP-1α/CCL3♦
IL-7♦	MIP-1β/CCL4♦
IL-9♦	MIP-2/CXCL2♦
IL-10♦	RANTES/CCL5♦
IL-12 (p40)♦	TNFα♦
IL-12 (p70)♦	VEGF-A

### Mouse Cytokine/ Chemokine Panel 2

- ☐ (Cat. No. MECY2MAG-73K)
- 14 (Cat. No. MECY2MAG-73KPX)
- 14 (Bulk Cat. No. MECY2MAG73KXPBK)

Erythropoietin (EPO)	IL-17A/F
Exodus-2/ CCL21/6Ckine	IL-20
Fractalkine/CX3CL1	MCP-5/CCL12
IFNβ1	MDC/CCL22
IFNγ	MIP-3α/CCL20
IL-11	MIP-3β/CCL19
IL-16	TARC/CCL17

### Mouse High Sensitivity T Cell

- ☐ (Cat. No. MHSTCMAG-70K)
- 18 (Cat. No. MHSTCMAG-70KPMX)
- 18 (Bulk Cat. No. MHSTCMAG-70KXPBK)

GM-CSF	IL-10
IFNγ	IL-12 (p70)
IL-1α	IL-13
IL-1β	IL-17A/CTLA8
IL-2	KC/GRO/CINC-1/ CXCL1
IL-4	LIX
IL-5	MCP-1/CCL2
IL-6	MIP-2/CXCL2
IL-7	TNFα

## Mouse Th17

- ☐ (Cat. No. MTH17MAG-47K)
- 25 (Cat. No. MT17MAG47K-PX25)
- 25 (Bulk Cat. No. MT17MAG47PMX25BK)

sCD40L	IL-17E/IL-25
GM-CSF	IL-17F
IFNγ	IL-21
IL-1β	IL-22
IL-2	IL-23
IL-4	IL-27
IL-5	IL-28B/IFNλ3
IL-6	IL-31
IL-10	IL-33/NF-HEV (mature)
IL-12 (p70)	MIP-3α/CCL20
IL-13	TNFα
IL-15	TNFβ/Lymphotoxin-a (LTA)
IL-17A/CTLA8	

### Mouse CD8+ T Cell

- ☐ (Cat. No. MCD8MAG-48K)
- 15 (Cat. No. MCD8MAG48K-PX15)
- 15 (Bulk Cat. No. MCD8MAG48KXP15BK)

sCD137/4-1BB/ TNFRSF9	IL-4
sFas/TNFRSF6	IL-5
sFasL	IL-6
GM-CSF	IL-10
Granzyme B	IL-13
IFNγ	MIP-1β/CCL4
IL-2	RANTES/CCL5
	TNFα

### Mouse Soluble Cytokine Receptor

- ☐ (Cat. No. MSCRMAG-42K)

sCD30	sRAGE
sGP130	sTNF RI
sIL-1RI	sTNF RII
sIL-1RII	sVEGFR1/sFlt-1
sIL-2Ra	sVEGFR2/sKDR/sFlk-1
sIL-4R	sVEGFR3/sFlt-4
sIL-6R	

### Mouse MMP Panel 1 (Serum/Plasma samples)

(Cat. No. MMMP1MAG-79K)

MMP-2	MMP-8
MMP-3	

### Mouse MMP Panel 2 (Serum/Plasma samples)

(Cat. No. MMMP2MAG-79K)

proMMP-9	MMP-12
----------	--------

## Non-Human Primate Cytokine Analysis

Save time and sample with the largest bead-based non-human primate multiplex assay on the market.

Read more at [SigmaAldrich.com/milliplex-primate](http://SigmaAldrich.com/milliplex-primate)



**Mouse MMP Panel 3**  
(Cell culture samples)

(Cat. No. MMMP3MAG-79K)

MMP-2	proMMP-9
MMP-3	MMP-12
MMP-8	

**Immune Response****Mouse Immunoglobulin Isotyping**

☐ (Cat. No. MGAMMAG-300K)

IgA	IgG2b
IgG1	IgG3
IgG2a	IgM

**Mouse IgE – Singleplex**  
(Cat. No. MGAMMAG-300E)

IgE
-----

**Metabolism/  
Endocrinology****Mouse Adipokine**  
(Serum/Plasma samples)

(Cat. No. MADKMAG-71K)

IL-6	PAI-1 (total)
Insulin	Resistin
Leptin	TNFα
MCP-1/CCL2	

**Mouse Adipocyte**  
(Cell culture samples)

(Cat. No. MADCYMAG-72K)

Adiponectin	PAI-1 (total)
IL-6	Resistin
Leptin	TNFα
MCP-1/CCL2	

**Mouse Adiponectin –  
Singleplex**  
(Serum/Plasma samples)

(Cat. No. MADPNMAG-70K-01)

Adiponectin
-------------

**Mouse Metabolic Hormone  
Expanded**

(Cat. No. MMHE-44K)

Amylin (active) †	Leptin
C-Peptide 2	MCP-1/CCL2
Ghrelin (active) †	Pancreatic Polypeptide (PP)
GIP (total)	PYY (total)
GLP-1 (active) †	Resistin
GLP-1 (total) †	Secretin
Glucagon †	TNFα
IL-6	
Insulin	

**Mouse Myokine**

(Cat. No. MMYOMAG-74K)

BDNF	Irisin
Erythropoietin (EPO) ★	LIF
FGF-21	Myostatin/GDF8
Follistatin-like Protein 1 (FSTL1)	Oncostatin-M (OSM)
IL-6	Osteocrin (OSTN)/Musclin
IL-15	Osteonectin/SPARC

**Mouse Aging Panel 1**

(Cat. No. MAGE1MAG-25K)

CTACK/CCL27	Jag1
FGF-21	Leptin
GnRH	Notch1
IL-6	TNFα

**Mouse Pituitary**

(Cat. No. MPTMAG-49K)

ACTH	LH
BDNF	Prolactin
FSH	TSH
GH	

**Cardiovascular****Mouse CVD Panel 1**

(Cat. No. MCVD1MAG-77K)

sCD31/sPECAM-1	ProMMP-9
sE-Selectin	sP-Selectin
sICAM-1	Thrombomodulin
PAI-1 (total)	

**Mouse CVD Panel 2**

(Cat. No. MCVD2MAG-77K)

sCD40L	Oncostatin M (OSM)
CXCL16	Placental Growth Factor 2
Endocan-1 (ESM-1)	Troponin I (TnI)
Follistatin (FST)	Troponin T (TnT)
LIGHT	

**Mouse Acute Phase Panel 2**

(Cat. No. MAP2MAG-76K)

α-1-Acid Glycoprotein (AGP)	CRP
α-2-Macroglobulin	Haptoglobin
Adipsin/Factor D	Serum Amyloid P (SAP)

**Cancer****Mouse Angiogenesis / Growth Factor Panel 1**

(Cat. No. MAGPMAG-24K)

sALK-1	IL-6
Amphiregulin	IL-17A/CTLA8
Angiopoietin-2 ▲	KC/GRO/CINC-1/CXCL1
Betacellulin ▲	Leptin
sCD31/sPECAM-1 ▲	MCP-1/CCL2
EGF	MIP-1α/CCL3
Endoglin	Placental Growth Factor 2
Endothelin-1	Prolactin
sFasL	SDF-1/CXCL12
FGF-2/FGF-basic	TNFα
Follistatin (FST)	VEGF-A
G-CSF	VEGF-C
HGF	VEGF-D
IL-1β	

**Mouse Immuno-Oncology  
Checkpoint Protein Panel 1**

☐ (Cat. No. MCKP1-110K)

⊗ (Cat. No. MCKP1-110K-PX28)

⊗ (Bulk Cat No. MCKP1-110K-PBK28)

4-1BBL/TNFSF9	Galectin-1
5'-NT/CD73	Galectin-3
B7-H2/ICOSL	GITR
B7-H3/CD276	Granzyme B
BCA-1/CXCL-13	HVEM
BTLA	IFNγ
CD137/4-1BB	IL-10
CD226/DNAM-1	LAG-3
CD25/IL-2Rα	PD-1
CD27	PD-L1
CD40	PD-L2
CD80/B7-1	TIM-3
CTLA-4/CD152	TLR-2
E-Cadherin	TNFα

**Legend key for MILLIPLEX® kits**

- † Analytes which cannot be plexed together:
  - Active and total
  - Free and total
- ◆ Available in Cat. No. listed
- ▼ Premix panel only
- Bulk indicates Space Saver Packaging
- ▲ These analytes cannot be plexed with other analytes in this panel in serum/plasma

- ‡ Requires a protease inhibitor during sample collection
- Requires sample extraction
- \*\* No standard/QC; antibody levels are reported as MFIs (Median Fluorescence Intensities)
- Serum/Plasma only
- ★ Tissue Culture samples only

- ^ Competitive assay format
- ☐ Available for custom premix
- Analyte requires a different sample dilution from others in panel
- ⊗ Analyte cannot be measured in serum
- # Requires sample acidification
- ♠ Analyte cannot be measured in plasma
- ⊙ Urine only



## Neuroscience

### Mouse Amyloid Beta

(Cat. No. MABMAG-83K)

Amyloid beta 1-40	Amyloid beta 1-42
-------------------	-------------------

### Mouse Neuropeptide ■ ^

(Cat. No. RMNPMAG-83K)

α-MSH	Oxytocin
β-Endorphin	Substance P
Neurotensin	

## Toxicity

### Mouse Kidney Injury Panel 1

(Cat. No. MKI1MAG-94K)

β-2-Microglobulin <sup>u</sup>	Renin
IP-10/CXCL10	TIMP-1
KIM-1	VEGF-A <sup>u</sup>

### Mouse Kidney Injury Panel 2

(Cat. No. MKI2MAG-94K)

Clusterin	NGAL/Lipocalin-2
Cystatin C	Osteopontin (OPN)
EGF	

## RAT

## Immunology

### Rat Cytokine/Chemokine

☑ (Cat. No. RECYTMAG-65K)

27 (Cat. No. RECYMAG65K27PMX)

27 (Bulk Cat. No. RECYMAG65PMX27BK)

EGF	IL-10
Eotaxin/CCL11	IL-12 (p70)
Fractalkine/CX3CL1	IL-13
G-CSF	IL-17A/CTLA8
GM-CSF	IL-18
KC/GRO/CINC-1/ CXCL1	IP-10/CXCL10
IFNγ	Leptin
IL-1α	LIX
IL-1β	MCP-1/CCL2
IL-2	MIP-1α/CCL3
IL-4	MIP-2/CXCL2
IL-5	RANTES/CCL5
IL-6	TNFα
	VEGF

## Metabolism/ Endocrinology

### Rat Adipokine

(Serum/Plasma samples)

(Cat. No. RADPKMAG-80K)

IL-1β	MCP-1/CCL2
IL-6	PAI-1 (total)
Insulin	TNFα
Leptin	

### Rat Adipocyte

(Cell culture samples)

(Cat. No. RADPCMAG-82K)

Adiponectin	MCP-1/CCL2
IL-1β	PAI-1 (total)
IL-6	TNFα
Leptin	

### Rat Metabolic Hormone Expanded

(Cat. No. RMHE-120K)

Amylin (active) <sup>▶</sup>	Insulin
C-Peptide 2	Leptin
Ghrelin (active) <sup>▶</sup>	MCP-1/CCL2
GIP (total)	Pancreatic Polypeptide (PP)
GLP-1 (active) <sup>†</sup> <sup>▶</sup>	PYY (total)
GLP-1 (total) <sup>†</sup> <sup>▶</sup>	Secretin
Glucagon <sup>▶</sup>	TNFα
IL-6	

### Rat Myokine

(Cat. No. RMYOMAG-88K)

BDNF	IL-15
Erythropoietin (EPO)	Irisin
FGF-21	LIF
Follistatin-like Protein 1 (FSTL1)	Myostatin/GDF8
Fractalkine/CX3CL1	Osteocrin (OSTN)/ Musclin
IL-6	Osteonectin/SPARC

### Rat Pituitary

(Cat. No. RPTMAG-86K)

ACTH	LH
BDNF	Prolactin
FSH	TSH
GH	

### Rat Stress Hormone ■

(Cat. No. RSHMAG-69K)

ACTH	Melatonin <sup>^</sup>
Corticosterone <sup>^</sup>	

### Rat Thyroid

(Cat. No. RTHYMAG-30K)

T3 <sup>^</sup>	TSH
T4 <sup>^</sup>	

## Cardiovascular

### Rat Cardiac Injury Panel 1

(Cat. No. RCI1MAG-87K)

Cardiac Troponin I (cTnI)	FABP3
Cardiac Troponin T (cTnT)	Follistatin-like Protein 1 (FSTL1)
Creatine Kinase Muscle (CKM)	Myosin Light Chain 3 (MYL3)
	TIMP-1

### Rat Vascular Injury Panel 1 (Serum/Plasma samples)

(Cat. No. RV1MAG-26K)

Caveolin-1	IL-6
Connective Tissue Growth Factor (CTGF)	MCP-1/ CCL2
KC/GRO/CINC-1/ CXCL1	PAI-1 (total)
	TIMP-1
	TNFα
	VEGF

### Rat Vascular Injury Panel 2 (Serum/Plasma samples)

(Cat. No. RV2MAG-26K)

Adiponectin	sICAM-1
sE-Selectin	

### Rat Vascular Injury Panel 3 (Serum/Plasma samples)

(Cat. No. RV3MAG-26K)

α-1-Acid Glycoprotein (AGP)	Haptoglobin
α-2-Macroglobulin (A2M)	

## Bone

### Rat Bone Panel 1 (Serum/Plasma samples)

(Cat. No. RBN1MAG-31K)

ACTH	Leptin
DKK1	Osteoprotegerin (OPG)
FGF-23	PTH
Insulin	Sclerostin (SOST)

## Neuroscience

### Rat Neuropeptide ■ ^

(Cat. No. RMNPMAG-83K)

α-MSH	Oxytocin
β-Endorphin	Substance P
Neurotensin	

## Quality in Every MILLIPLEX® Kit

We pride ourselves on our quality R&D, support, manufacturing, and QC.

Read more at: [SigmaAldrich.com/milliplex-quality](https://SigmaAldrich.com/milliplex-quality)



## Toxicity

### Rat Kidney Toxicity Panel 1 (Urine samples)

(Cat. No. RKT1MAG-37K)

Clusterin	Osteopontin (OPN)
GSTα <sup>^</sup>	TIMP-1
IP-10/CXCL10	VEGF-A
KIM-1	

### Rat Kidney Toxicity Panel 2 (Urine samples)

(Cat. No. RKT2MAG-37K)

α-1-Acid Glycoprotein (AGP)	Cystatin C
Albumin <sup>^</sup>	EGF
β-2-Microglobulin	NGAL/Lipocalin-2

### Rat Liver Injury

(Cat. No. RLI1MAG-92K)

5'NT/CD73	GSTα
ARG1	SDH
GOT1	

## COMPANION/ AGRICULTURAL

## Immunology

### Bovine Cytokine/Chemokine Panel 1

- ☉ (Cat. No. BCYT1-33K)
- 15 (Cat. No. BCYT1-33K-PX15)
- 15 (Bulk Cat. No. BCYT1-33K-PXBK15)

IFNγ	IL-36RA/IL-1F5
IL-1α	IP-10/CXCL10
IL-1β	MCP-1/CCL2
IL-4	MIP-1α/CCL3
IL-6	MIP-1β/CCL4
IL-8/CXCL8	TNFα
IL-10	VEGF-A
IL-17A/CTLA8	

### Bovine Acute Phase Protein

(Cat. No. BAPP1-150K)

Haptoglobin	Fibrinogen ☉
-------------	--------------

### Canine Cytokine/Chemokine

- ☉ (Cat. No. CCYTOMAG-90K)
- 15 (Cat. No. CCYTMG-90K-PX13)
- 15 (Bulk Cat. No. CCYTOMAG90KPX13BK)

GM-CSF	IL-15
IFNγ	IL-18
IL-2	IP-10/CXCL10
IL-6	KC-like
IL-7	MCP-1/CCL2
IL-8/CXCL8	TNFα
IL-10	

### Chicken Cytokine/Chemokine

- ☉ (Cat. No. GCYT1-16K)
- 12 (Cat. No. GCYT1-16K-PX12)
- 12 (Cat. No. GCYT1-16K-PXBK12)

IFNα	IL-21
IFNγ	M-CSF
IL-2	MIP-1β/CCL4
IL-6	MIP-3α/CCL20
IL-10	RANTES/CCL5
IL-16	VEGF

### Equine Cytokine/Chemokine

- ☉ (Cat. No. EQCYTMAG-93K)
- 23 (Cat. No. EQCYTMG-93KPX23)
- 23 (Cat. No. EQCTMG93KPX23BK)

Eotaxin/CCL11	IL-6
FGF-2/FGF-basic	IL-8/CXCL8
Fractalkine/CX3CL1	IL-10
G-CSF	IL-12 (p70)
GM-CSF	IL-13
GRO	IL-17A/CTLA8
IFNγ	IL-18
IL-1α	IP-10/CXCL10
IL-1β	MCP-1/CCL2
IL-2	RANTES/CCL5
IL-4	TNFα
IL-5	

### Feline Cytokine/Chemokine ▼

- 19 (Cat. No. FCYTOMAG-20K-PMX)
- 19 (Bulk Cat. No. FCYTOMAG20KPMX19BK)
- NON-CONFIGURABLE KIT**

sFAS/TNFRSF6	IL-13
Flt3 Ligand	IL-18
GM-CSF	KC/GRO/CINC-1/ CXCL1
IFNγ	MCP-1/CCL2
IL-1β	PDGF-BB
IL-2	RANTES/CCL5
IL-4	SCF
IL-6	SDF-1/CXCL12
IL-8/CXCL8	TNFα
IL-12 (p40)	

### Ovine Cytokine/Chemokine Panel 1

- ☉ (Cat. No. SCYT1-91K)
- 14 (Cat. No. SCYT1-91K-PX14)
- 14 (Bulk Cat. No. SCYT1-91K-PXBK14)

IFNγ	IL-17A/CTLA8
IL-1α	IL-36RA/IL-1F5
IL-1β	IP-10/CXCL10
IL-4	MIP-1α/CCL3
IL-6	MIP-1β/CCL4
IL-8/CXCL8	TNFα
IL-10	VEGF-A

### Porcine Cytokine/Chemokine

- ☉ (Cat. No. PCYTOMAG-23K)
- 15 (Cat. No. PCYTOMG-23K-13PX)
- 15 (Bulk Cat. No. PCYTOMAG23PMX13BK)

GM-CSF	IL-6
IFNγ	IL-8/CXCL8
IL-1α	IL-10
IL-1β	IL-12
IL-1Ra	IL-18
IL-2	TNFα
IL-4	

### Porcine Acute Phase Protein

(Cat. No. PAPP1-160K)

CRP	Haptoglobin
-----	-------------

## MILLIPLEX® Veterinary Medicine and Animal Health Kits

Expand your possibilities in animal health research with our wide selection of biomarker kits.

Discover more at [SigmaAldrich.com/vetmed](http://SigmaAldrich.com/vetmed)



### Legend key for MILLIPLEX® kits

- † Analytes which cannot be plexed together:
  - Active and total
  - Free and total
- ♦ Available in Cat. No. listed
- ▼ Premix panel only
- Bulk indicates Space Saver Packaging
- ▲ These analytes cannot be plexed with other analytes in this panel in serum/plasma

- ▶ Requires a protease inhibitor during sample collection
- Requires sample extraction
- \*\* No standard/QC; antibody levels are reported as MFIs (Median Fluorescence Intensities)
- Serum/Plasma only
- ★ Tissue Culture samples only

- ∧ Competitive assay format
- ☉ Available for custom premix
- Analyte requires a different sample dilution from others in panel
- Analyte cannot be measured in serum
- # Requires sample acidification
- § Analyte cannot be measured in plasma
- u Urine only

## Metabolism/ Endocrinology

### Canine Gut Hormone

(Cat. No. CGTMAG-98K)

Amylin (total) ▶	Insulin
Ghrelin (active) ▶	Leptin
GIP (total)	Pancreatic
GLP-1 (active) ▶	Polypeptide (PP)
Glucagon	PYY (total)

### Canine Pituitary Expanded Panel

(Cat. No. CANPIT-96K)

ACTH	LH
FSH	Prolactin
GH	TSH

## Toxicity

### Canine Kidney Toxicity Expanded Panel 1 (Urine samples)

(Cat. No. CKT1MAG-97K)

Clusterin	MCP-1/CCL2
Cystatin C	NGAL/Lipocalin-2
IL-8/CXCL8	Osteopontin (OPN)
KIM-1	

### Canine Kidney Toxicity Panel 2 (Urine samples)

(Cat. No. CKT2MAG-97K)

Albumin	RBP4
β-2-Microglobulin	TFF-3

## MULTI-SPECIES

### Immunology

#### Multi-Species TGFβ – Singleplex #

(Cat. No. TGFBMAG-64K-01)  
(Bulk Cat. No. TGFBMAG-64K-01BK)  
Species: C, E, F, H, M, NHP, Por, R, guinea pig, hamster, rabbit

TGFβ1

#### Multi-Species TGFβ – 3 Plex ▼#

(Cat. No. TGFBMAG-64K-03)  
Species: H, M, NHP, R, guinea pig, hamster, mini pig; additionally, TGF-β1 and TGF-β2 can be detected in the serum of C, E, and rabbit

**NON-CONFIGURABLE KIT**

TGFβ1                      TGFβ3  
TGFβ2

### Metabolism/ Endocrinology

#### Multi-Species Hormone ■ ^

(Cat. No. MSHMAG-21K)  
Species: C, E, F, H, M, NHP, Por, R, guinea pig, hamster, rabbit

Cortisol                      T3  
Estradiol                      T4  
Progesterone

## KITS TO BE PHASED OUT

### Human Cytokine/Chemokine Panel II

☐ (Cat. No. HCYP2MAG-62K)  
23 (Cat. No. HCP2MAG-62K-PX23)  
23 (Bulk Cat. No. HCP2MAG62KPX23BK)

6Ckine/CCL21/ Exodus-2	IL-28A/IFNλ2
BCA-1/CXCL13	IL-33/NF-HEV (mature)
CTACK/CCL27	LIF
ENA-78/CXCL5	MCP-2/CCL8
Eotaxin-2/CCL24/ MIPF-2	MCP-4/CCL13
Eotaxin-3/CCL26	MIP-1δ/MIP-5/CCL15
I-309/CCL1	SCF
IL-16	SDF-1/CXCL12
IL-20	TARC/CCL17
IL-21	TPO
IL-23	TRAIL/TNFSF10
	TSLP

MULTIPLE

MILLIPIX® METABOLISM / ENDOCRINOLOGY / TOXICITY / IMMUNOLOGY

FOR RESEARCH USE ONLY. NOT FOR USE IN DIAGNOSTIC PROCEDURES.

# Cell Signaling MILLIPLEX® Assays

## Akt/mTOR (Phosphoprotein) – 11 Plex

(Cat. No. 48-611MAG) AB2 ▼ **NON-CONFIGURABLE KIT**

Analyte	Total	Phosphorylated	
Akt/PKB	✓ (Ser473)	H, M, R	
GSK3α	✓ (Ser21)	H, M, R	
GSK3β	✓ (Ser9)	H, M, R	
IGF1R	✓ (Tyr1135/1136)	H, M	
IR	✓ (Tyr1162/1163)	H	
IRS1	✓ (Ser636)	H, M, R	
mTOR	✓ (Ser2448)	H, M, R	
p70S6 Kinase	✓ (Thr412)	H, M, R	
PTEN	✓ (Ser380)	H, M, R	
RPS6	✓ (Ser235/236)	H, M, R	
TSC2	✓ (Ser939)	H, M, R	

## Akt/mTOR (Total) – 11 Plex

(Cat. No. 48-612MAG) AB2 ▼ **NON-CONFIGURABLE KIT**

Analyte	Total	Phosphorylated	
Akt/PKB	✓	H, M, R	
GSK3α	✓	H, M, R	
GSK3β	✓	H, M, R	
IGF1R	✓	H, M, R	
IR	✓	H, R	
IRS1	✓	H, M, R	
mTOR	✓	H, M, R	
p70S6 Kinase	✓	H, M, R	
PTEN	✓	H, M, R	
RPS6	✓	H, M, R	
TSC2	✓	H, M, R	

## Early Apoptosis – 7 Plex

(Cat. No. 48-669MAG) AB2 ▼ **NON-CONFIGURABLE KIT**

Analyte	Total	Phosphorylated	
Akt/PKB	✓ (Ser473)	H, M, R	
BAD	✓ (Ser112)	H, M	
Bcl-2	✓ (Ser70)	H	
Active Caspase-8 (Asp384)	✓	H	
Active Caspase-9 (Asp315)	✓	H	
JNK/SAPK1	✓ (Thr183/Tyr185)	H, M, R	
p53	✓ (Ser46)	H	

## Human Bcl-2 Family Apoptosis Panel 1 - 6 Plex

(Cat. No. 48-682MAG) AB1 ▼ **NON-CONFIGURABLE KIT**

Analyte	Total	Phosphorylated	
BAD	✓	✓ (Ser112)	H
BAX	✓		H
Bcl-xL/BAD (interaction)	✓		H
BIM	✓		H
Mcl-1/BIM (interaction)	✓		H

## Human Bcl-2 Family Apoptosis Panel 2 - 4 Plex

(Cat. No. 48-683MAG) AB1 ▼ **NON-CONFIGURABLE KIT**

Analyte	Total	Phosphorylated	
Bcl-2	✓		H
Bcl-xL	✓		H
Mcl-1	✓		H
NOXA/Mcl-1 (interaction)	✓		H

## Human DNA Damage/Genotoxicity – 7 Plex

(Cat. No. 48-621MAG) AB1 ▼ **NON-CONFIGURABLE KIT**

Analyte	Total	Phosphorylated	
ATR	✓		H
Chk1		✓ (Ser345)	H, M, R
Chk2		✓ (Thr68)	H
H2A.X		✓ (Ser139)	H, M, R
MDM2	✓		H, M, R
p21	✓		H
p53		✓ (Ser15)	H

## MAPK/SAPK (Phosphoprotein) – 10 Plex

(Cat. No. 48-660MAG) AB2 ▼ **NON-CONFIGURABLE KIT**

Analyte	Total	Phosphorylated	
ATF2		✓ (Thr71)	H, M
c-Jun		✓ (Ser73)	H, M, R
Erk/MAPK 1/2		✓ (Thr185/Tyr187)	H, M, R
HSP27		✓ (Ser78)	H
JNK/SAPK1		✓ (Thr183/Tyr185)	H, M, R
MEK1		✓ (Ser222)	H, M, R
MSK1		✓ (Ser212)	H, M
p38/SAPK2A/B		✓ (Thr180/Tyr182)	H, M, R
p53		✓ (Ser15)	H
STAT1		✓ (Tyr701)	H, M

## Learn More About Cancer and Metastasis Signaling Pathways

Read about all of the kits that can elucidate your signaling research at [SigmaAldrich.com/milliplex-cancer-cs](http://SigmaAldrich.com/milliplex-cancer-cs)

- Can be plexed with other 2 Plexes
- \* Cannot plex with other phospho Akt
- ▼ Premix panel only

**AB1:** Uses Assay Buffer 1  
**AB2:** Uses Assay Buffer 2

**H** Human  
**M** Mouse  
**R** Rat

**Human RTK (Phosphoprotein)**

(Choose analytes that meet your needs)

(Cat. No. HPRTKMAG-01K) AB1

Analyte	Total	Phosphorylated
c-Kit		(pan Tyr) H
c-Met/HGFR		(pan Tyr) H
ErbB1/EGFR		(pan Tyr) H
ErbB2/HER2		(pan Tyr) H
ErbB3/HER3		(pan Tyr) H
ErbB4/HER4		(pan Tyr) H
FGFR1		(pan Tyr) H
Flt3		(pan Tyr) H
IGF1R		(pan Tyr) H
M-CSFR		(pan Tyr) H
PDGFR $\alpha$		(pan Tyr) H, M, R
PDGFR $\beta$		(pan Tyr) H
TIE1		(pan Tyr) H
TIE2		(pan Tyr) H
VEGFR1/Flt-1		(pan Tyr) H
VEGFR2/KDR/Flk-1		(pan Tyr) H
VEGFR3/Flt-4		(pan Tyr) H, M, R

**Multi-Pathway (Phosphoprotein) – 9 Plex**(Cat. No. 48-680MAG) AB2 ▼ **NON-CONFIGURABLE KIT**

Analyte	Total	Phosphorylated
Akt/PKB	✓ (Ser473)	H, M, R
CREB	✓ (Ser133)	H, M, R
Erk/MAPK 1/2	✓ (Thr185/Tyr187)	H, M, R
JNK/SAPK1	✓ (Thr183/Tyr185)	H, M, R
NF $\kappa$ B	✓ (Ser536)	H, M, R
p38/SAPK2A/B	✓ (Thr180/Tyr182)	H, M, R
p70S6 Kinase	✓ (Thr412)	H, M, R
STAT3	✓ (Ser727)	H, M, R
STAT5A/B	✓ (Tyr694/699)	H, M, R

**Multi-Pathway (Total) – 9 Plex**(Cat. No. 48-681MAG) AB2 ▼ **NON-CONFIGURABLE KIT**

Analyte	Total	Phosphorylated
Akt/PKB	✓	H, M, R
CREB	✓	H, M, R
Erk/MAPK 1/2	✓	H, M, R
JNK/SAPK1	✓	H, M, R
NF $\kappa$ B	✓	H, M, R
p38/SAPK2A/B	✓	H, M, R
p70S6 Kinase	✓	H, M, R
STAT3	✓	H, M, R
STAT5A/B	✓	H, M, R

**NF $\kappa$ B – 6 Plex**(Cat. No. 48-630MAG) AB1 ▼ **NON-CONFIGURABLE KIT**

Analyte	Total	Phosphorylated
c-Myc	✓	H
FADD		✓ (Ser194) H
I $\kappa$ B $\alpha$		✓ (Ser32) H
IKK $\alpha$ / $\beta$		✓ (Ser177/181) H
NF $\kappa$ B		✓ (Ser536) H, M
TNFR1	✓	H

**Protein Translation – 6 Plex**(Cat. No. 48-655MAG) AB2 ▼ **NON-CONFIGURABLE KIT**

Analyte	Total	Phosphorylated
eIF2a		✓ (Ser51) H, M, R
eIF-4B		✓ (Ser422) H, M, R
eIF-4E		✓ (Ser209) H, M, R
eIF-4G		✓ (Ser1108) H, M, R
4E-BP1	✓	✓ (Thr37/46) H, M, R

**Human Ras-Raf Oncoprotein – 6 Plex**(Cat. No. 48-684MAG) AB2 ▼ **NON-CONFIGURABLE KIT**

Analyte	Total	Phosphorylated
BRAF		✓ (Ser446) H, M, R
CRAF		✓ (Ser338) H, M, R
MEK1		✓ (Ser217/221) H, M, R
Ras	✓	H, M, R
RasG12D	✓	H
RasG12V	✓	H

**Src Family Kinase Active Site (Phosphoprotein) – 8 Plex**(Cat. No. 48-650MAG) AB2 ▼ **NON-CONFIGURABLE KIT**

Analyte	Total	Phosphorylated
Blk		✓ (Tyr389) H
Fgr		✓ (Tyr412) H, R
Fyn		✓ (Tyr420) H, M, R
Hck		✓ (Tyr411) H, M
Lck		✓ (Tyr394) H, M, R
Lyn		✓ (Tyr397) H, R
Src		✓ (Tyr419) H, M, R
Yes		✓ (Tyr421) H, M, R

**STAT (Phosphoprotein) – 5 Plex**(Cat. No. 48-610MAG) AB2 ▼ **NON-CONFIGURABLE KIT**

Analyte	Total	Phosphorylated
STAT1		✓ (Tyr701) H, M
STAT2		✓ (Tyr690) H
STAT3		✓ (Tyr705) H, M, R
STAT5A/B		✓ (Tyr694/699) H, M, R
STAT6		✓ (Tyr641) H



**T-Cell Receptor (Phosphoprotein) – 7 Plex**(Cat. No. 48-690MAG) AB2 ▼ ●●● **NON-CONFIGURABLE KIT**

Analyte	Total	Phosphorylated	
CD3ε		✓ (pan Tyr)	H
CREB		✓ (Ser133)	H, M, R
Erk/MAPK 1/2		✓ (Thr185/Tyr187)	H, M, R
LAT		✓ (pan Tyr)	H
Lck		✓ (pan Tyr)	H, M, R
Syk		✓ (pan Tyr)	H
ZAP-70		✓ (pan Tyr)	H

**TGFβ – 6 Plex**(Cat. No. 48-614MAG) AB2 ▼ ●●● **NON-CONFIGURABLE KIT**

Analyte	Total	Phosphorylated	
Akt/PKB		✓ (Ser473)	H, M, R
Erk/MAPK 1/2		✓ (Thr185/Tyr187)	H, M, R
SMAD2		✓ (Ser465/467)	H, M, R
SMAD3		✓ (Ser423/425)	H, M, R
SMAD4	✓		H, M, R
TGFβRII	✓		H

**Akt Phospho/Total – 2 Plex**(Cat. No. 48-618MAG) AB2 ▼ \* ●●● **NON-CONFIGURABLE KIT**

Analyte	Total	Phosphorylated	
Akt/PKB		✓ (Ser473)	H, M, R
Akt/PKB	✓		H, M, R

**Akt1 Phospho/Total – 2 Plex**(Cat. No. 48-631MAG) AB2 ▼ \* ●●● **NON-CONFIGURABLE KIT**

Analyte	Total	Phosphorylated	
Akt1		✓ (Ser473)	H, M, R
Akt1	✓		H, M, R

**Akt2 Phospho/Total – 2 Plex**(Cat. No. 48-632MAG) AB2 ▼ \* ●●● **NON-CONFIGURABLE KIT**

Analyte	Total	Phosphorylated	
Akt2		✓ (Ser474)	H, M, R
Akt2	✓		H, M, R

**CREB Phospho/Total – 2 Plex**(Cat. No. 48-628MAG) AB2 ▼ ●●● **NON-CONFIGURABLE KIT**

Analyte	Total	Phosphorylated	
CREB		✓ (Ser133)	H, M, R
CREB	✓		H, M, R

**Erk/MAPK 1/2 Phospho/Total – 2 Plex**(Cat. No. 48-619MAG) AB2 ▼ ●●● **NON-CONFIGURABLE KIT**

Analyte	Total	Phosphorylated	
Erk/MAPK 1/2		✓ (Thr185/Tyr187)	H, M, R
Erk/MAPK 1/2	✓		H, M, R

**JNK Phospho/Total – 2 Plex**(Cat. No. 48-622MAG) AB2 ▼ ●●● **NON-CONFIGURABLE KIT**

Analyte	Total	Phosphorylated	
JNK/SAPK1		✓ (Thr183/Tyr185)	H, M, R
JNK/SAPK1	✓		H, M, R

**mTOR Phospho/Total – 2 Plex**(Cat. No. 48-625MAG) AB2 ▼ ●●● **NON-CONFIGURABLE KIT**

Analyte	Total	Phosphorylated	
mTOR		✓ (Ser2448)	H, M, R
mTOR	✓		H, M

**p38 Phospho/Total – 2 Plex**(Cat. No. 48-624MAG) AB1 or AB2 ▼ ●●● **NON-CONFIGURABLE KIT**

Analyte	Total	Phosphorylated	
p38/SAPK2A/B		✓ (Thr180/Tyr182)	H, M, R
p38/SAPK2A/B	✓		H, M, R

**STAT3 Phospho/Total – 2 Plex**(Cat. No. 48-623MAG) AB2 ▼ ●●● **NON-CONFIGURABLE KIT**

Analyte	Total	Phosphorylated	
STAT3		✓ (Tyr705)	H, M, R
STAT3	✓		H, M, R

**MAPmate™ Singleplex Loading Control Assays**

Plex loading control MAPmate™ assays into existing MILLIPLEX® Cell Signaling Panels. Our Cell Signaling Buffer and Detection Kit (Cat. No. 48-602MAG), may be purchased if additional buffers are required.

MAPmate™ Kits	Species Homology (Buffer)	Cat. No.
β-Tubulin (total)	H, M, R (AB1 & AB2)	46-713MAG
GAPDH (total)	H (AB2)	46-667MAG

- Can be plexed with other 2 Plexes
- \* Cannot plex with other phospho Akt
- ▼ Premix panel only

AB1: Uses Assay Buffer 1  
AB2: Uses Assay Buffer 2

H Human  
M Mouse  
R Rat

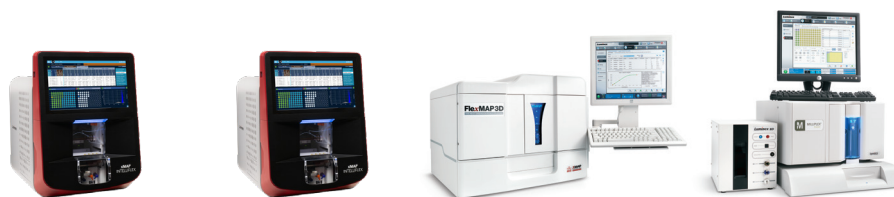
# Luminex® Multiplexing Platforms

## Driving Assay Consistency

Combined with the largest portfolio of multiplex analytes available, we provide you the power of Luminex® xMAP® technology, the most trusted, widely used platform for biomarker screening and protein analysis. As a Luminex® partner, we are a preferred distributor of Luminex® instruments, accessories, and software.

## Luminex® xMAP® technology offers many advantages compared to other immunoassay methods:

- **Multiplexing:** Data generated simultaneously is less prone to user error, enabling the end-user to construct cleaner data sets to explore multiple parameters.
- **Low sample volume:** With minimal hands-on time, screen multiple analytes in a single sample using a maximum of 25 µL per well.
- **Magnetic bead-based format:** Responds rapidly and efficiently to a magnetic field, enabling better and faster washing techniques, including high-throughput washing options.
- **Reproducibility:** High-volume production of xMAP® microspheres allows assay standardization that solid-phased flat arrays cannot provide.
- **Speed/high-throughput:** Simultaneously measure the concentration of a large number of different analytes in a single sample, in 96- or 384-well format, to do your work faster, gaining early and comprehensive data.



## Specifications

Instruments	xMAP® INTELLIFLEX® DR-SE*	xMAP® INTELLIFLEX®	FLEXMAP 3D®	Luminex® 200™
<b>Cat. No.</b>	<b>INTELLIFLEX-DRSE</b>	<b>INTELLIFLEX-RU0</b>	<b>40-014</b>	<b>40-012</b>
<b>Optics Hardware</b>	Lasers/APDs/PMTs	Lasers/APDs/PMTs	Lasers/APDs/PMTs	Lasers/APDs/PMTs
<b>Technology</b>	Flow-based	Flow-based	Flow-based	Flow-based
<b>Multiplexing</b>	Up to 500	Up to 500	Up to 500	Up to 100 (80 on MagPlex® microspheres)
<b>Dynamic Range**</b>	≥5.5 logs (RP1) ≥4.5 logs (RP2)	≥5.5 logs (RP1)	≥4.5 logs (RP1)	≥3.5 logs (RP1)
<b>Read Time</b>	96-well in ~20 min 384-well in ~75 min	96-well in ~20 min 384-well in ~75 min	96-well in ~20 min 384-well in ~75 min	96-well in ~45 min
<b>Applications</b>	Protein/nucleic acid	Protein/nucleic acid	Protein/nucleic acid	Protein/nucleic acid
<b>Automation-Compatible Hardware</b>	Front and side eject	Front eject only	Front eject only	Front eject only
<b>Reporter Laser</b>	532 nm (green) 405 nm (violet)	532 nm (green)	532 nm (green)	532 nm (green)
<b>IQ/OQ</b>	Yes	Yes	Yes	Yes
<b>21 CFR Compliance</b>	Yes	Yes	Yes	Yes
<b>Automation</b>	Yes	Yes	Yes	Yes
<b>Data Analysis</b>	Belysa® software	Belysa® software	xPONENT® basic + Belysa® software	xPONENT® basic + Belysa® software
<b>Plate Format</b>	96-well and 384-well	96-well and 384-well	96-well and 384-well	96-well
<b>Footprint (Linear Bench Space, including PC)</b>	58.4 cm x 61 cm x 76.2 cm	58.4 cm x 61 cm x 76.2 cm	110 cm x 62 cm x 63 cm	115 cm x 60 cm x 50 cm
<b>Weight</b>	54.4 kg (120 lbs)	54.4 kg (120 lbs)	77.1 kg (170 lbs)	49 kg (113 lbs)

\*DR-SE = dual reporter side eject; \*\*RP = reporter

Luminex® 200™ and FLEXMAP 3D® systems run on the Luminex® xPONENT® 4.3 data acquisition platform; the xMAP® INTELLIFLEX® systems run on INTELLIFLEX 1.0. All systems provide a consistent experience, from data input to results, no matter which instrument is used. All software adapts to fit the capabilities of each platform.

## Next Generation Multiplexing

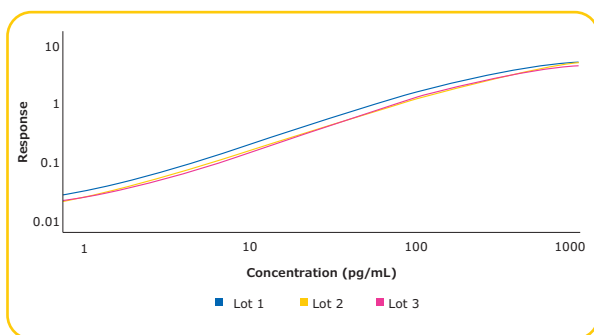
Harness the power of the xMAP® INTELLIFLEX® system at [SigmaAldrich.com/intelliflex](http://SigmaAldrich.com/intelliflex)



## Conferma<sup>®</sup> ELISAs

Conferma<sup>®</sup> ELISAs are developed with a focus on critical reagents to deliver assays with excellent detectability, sensitivity, and lot-to-lot consistency.

Analyte	Std. Range (pg/mL)	LLOQ (Curve) (pg/mL)	Cat. No.
IL-6 (Human)	1.17 – 150	1.17	EZIL6-98K
IL-8 (Human)	0.82 – 200	0.82	EZHIL8-100K
MCP-1 (Human)	7.81 – 1,000	7.81	EZMCP1-99KRM
TNF- $\alpha$ (Human)	1.65 – 400	1.65	EZHTNFA-150K



Three lots of the TNF- $\alpha$  Conferma<sup>®</sup> ELISAs were evaluated for parallelism. Variation was minimal demonstrating consistent lot-to-lot performance.

Curve	Parallelism
Lot 2 vs. Lot 1	0.983
Lot 3 vs. Lot 1	0.992

### ELISAs Designed For Consistency

Get details on Conferma<sup>®</sup> ELISA performance and see the difference for yourself at: [SigmaAldrich.com/conferma](https://SigmaAldrich.com/conferma)



## Millipore<sup>®</sup> Brand ELISAs

Metabolic/Endocrine/ELISAs	Species	Standard Curve Range	Sensitivity	Sample Volume	Cat. No.	Bulk Packaging Cat. No.*
Adiponectin	Human	1.56–200 ng/mL	0.2 ng/mL	10 $\mu$ L	EZHADP-61K	EZHADP-61BK
Adiponectin (High Molecular Weight)	Human	1.5–200 ng/mL	0.5 ng/mL	10 $\mu$ L	EZHMWAN-65K	
Adiponectin	Mouse	1–50 ng/mL	0.2 ng/mL	10 $\mu$ L	EZMADP-60K	EZMADP-60BK
Amylin (active)	Human	1–100 pM	0.7 pM	50 $\mu$ L	EZHA-52K	
C-Peptide	Human	0.2–20 ng/mL	0.05 ng/mL	10 $\mu$ L	EZHCP-20K	EZHCP-20BK
C-Peptide	Canine	0.2–10 ng/mL	0.24 ng/mL	25 $\mu$ L	EZCCP-47K	
C-Peptide 2	Mouse, Rat	25–1,600 pM	15.0 pM	20 $\mu$ L	EZRMCP2-21K	
C-Reactive Protein (CRP)	Human	0.12–10 ng/mL	0.2 ng/mL	2 $\mu$ L	CYT298	
C-Reactive Protein (CRP)	Rat	4.9–10 ng/mL	2.5 ng/mL	2 $\mu$ L	CYT294	
FGF-21	Human	31.25–2,000 pg/mL	10.0 pg/mL	50 $\mu$ L	EZHFGF21-19K	
FGF-21	Mouse, Rat	49.4–12,000 pg/mL	10.0 pg/mL	10 $\mu$ L	EZRMFGF21-26K	
FGF-23	Human	9.9–2,400 pg/mL	3.5 pg/mL	50 $\mu$ L	EZHFGF23-32K	EZHFGF23-32BK
Ghrelin (active)	Human	25–2,000 pg/mL	15.0 pg/mL	20 $\mu$ L	EZGRA-88K	EZGRA-88BK
Ghrelin (active)	Mouse, Rat	25–2,000 pg/mL	8.0 pg/mL	20 $\mu$ L	EZRGRA-90K	
Ghrelin (total)	Human	100–5,000 pg/mL	50.0 pg/mL	20 $\mu$ L	EZGRT-89K	EZGRT-89BK
Ghrelin (total)	Mouse, Rat	0.1–10 ng/mL	0.04 ng/mL	20 $\mu$ L	EZRGR-91K	
GIP (total)	Human	8.2–2,000 pg/mL	4.2 pg/mL	20 $\mu$ L	EZHGIP-54K	EZHGIP-54BK
GIP (total)	Mouse, Rat	8.2–2,000 pg/mL	4.2 pg/mL	10 $\mu$ L	EZRMGIP-55K	EZRMGIP-55BK
GLP-1 (active)	Multi-Species	2–100 pM	1.0 pM	100 $\mu$ L	EGLP-35K	EGLP-35BK
GLP-1 High Sensitivity (active) $\Delta$ ••	Multi-Species	See data sheet	0.14 pM	50 $\mu$ L	EZGLPHS-35K	EZGLPHS-35BK
GLP-1 (total)	Multi-Species	4.1–1,000 pM	1.0 pM	20–50 $\mu$ L	EZGLP1T-36K	EZGLP1T-36BK

Metabolic/Endocrine/ ELISAs	Species	Standard Curve Range	Sensitivity	Sample Volume	Cat. No.	Bulk Packaging Cat. No.*
GLP-2	Multi-Species	1–64 ng/mL	0.3 ng/mL	50 µL	EZGLP2-37K	
Glucagon $\Delta$	Human, Mouse, Rat	0.02–2 ng/mL	0.003 ng/mL	150–300 µL	EZGLU-30K	EZGLU-30BK
Growth Hormone (GH)	Mouse, Rat	0.7–50 ng/mL	0.07 ng/mL	10 µL	EZRMGH-45K	EZRMGH-45BK
Insulin	Human	2–200 µU/mL	1.0 µU/mL	20 µL	EZHI-14K	EZHI-14BK
Insulin	Mouse, Rat	0.2–10 ng/mL	0.1 ng/mL	10 µL	EZRMI-13K	EZRMI-13BK
Leptin	Canine	0.78–50 ng/mL	0.21 ng/mL	20 µL	EZCL-31K	
Leptin	Mouse	0.2–30 ng/mL	0.05 ng/mL	10 µL	EZML-82K	EZML-82BK
Leptin	Rat	0.2–30 ng/mL	0.08 ng/mL	10 µL	EZRL-83K	EZRL-83BK
Leptin “Dual Range”	Human	0.5–100 ng/mL	0.2 ng/mL	25 µL	EZHL-80SK	EZHL-80BK
Procollagen Type IIA N-Propeptide (PIIANP)	Human	lot dependent	30.0 ng/mL	5 µL	EZPIIANP-53K	
Proinsulin (total)	Human	2–200 pM	0.5 pM	20 µL	EZHPI-15K	EZHPI-15BK
PYY (total)	Human	10–2,000 pg/mL	6.5 pg/mL	20 µL	EZHPYYT66K	
Resistin	Human	0.16–5 ng/mL	0.02 ng/mL	20 µL	EZHR-95K	EZHR-95BK
SAA-3	Mouse	0.078–5 µg/mL	0.078 µg/mL	10 µL	EZMSAA3-12K	

Neuroscience ELISAs	Species	Standard Curve Range	Sensitivity	Sample Volume	Cat. No.
Amyloid beta 1-40	Human	16–500 pg/mL	4 pg/mL	50 µL	EZHS40
Amyloid beta 1-42	Human	16–500 pg/mL	5 pg/mL	50 µL	EZHS42
Amyloid beta, Set	Human	Contains 1 each of EZHS40 and EZHS42			EZHS-SET
Amyloid beta (Brain) 1-40	Human	16–500 pg/mL	4 pg/mL	50 µL	EZBRAIN40
Amyloid beta (Brain) 1-42	Human	16–500 pg/mL	5 pg/mL	50 µL	EZBRAIN42
Amyloid beta (Brain), Set	Human	Contains 1 each of EZBRAIN40 and EZBRAIN42			EZBRAIN-SET
BDNF (Brain-Derived Neurotrophic Factor)	Human, Rat	7.8–500 pg/mL	7.8 pg/mL	50 µL	CYT306
GFAP (Glial Fibrillary Acidic Protein)	Human, Mouse, Rat	1.5–100 ng/mL	1.5 ng/mL	100 µL	NS830
NPY (Neuropeptide Y)	Human	5–1,000 pg/mL	2 pg/mL	50 µL	EZHNPY-25K
NPY (Neuropeptide Y)	Mouse, Rat	0.01–2 ng/mL	0.004 ng/ mL	20 µL	EZRMNPY-27K
PEDF (Pigment Epithelium-Derived Factor)	Human	0.9–62.5 ng/mL	0.9 ng/mL	50 µL	CYT420
Phosphorylated Neurofilament, (pNF-H) Sandwich	Multi- Species	0.0293–15 ng/mL	0.0585 ng/ mL	1–10 µL	NS170
S100B	Human	2.7–2,000 pg/mL	1.3 pg/mL	50 µL	EZHS100B-33K

\* Bulk packaging available on select kits — more environmentally friendly and saves space (10 kit equivalent)

• Preferred assay for measuring GLP-1 (active)

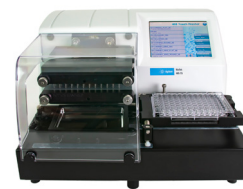
$\Delta$  Chemiluminescent assay

## Sigma-Aldrich® Brand ELISAs

We offer a portfolio of >1,300 ELISAs and EIAs, covering a diverse range of species, research areas, and sample types. Find your ELISA at [SigmaAldrich.com/elisa](https://SigmaAldrich.com/elisa)



# Ancillary Equipment to Optimize Your Assays



Instruments	BioTek® 405™ TSUVS Magnetic Washer	BioTek® 405™ TS Magnetic 96-Well Washer
<b>Cat. No.</b>	95-0004-06	40-092AB
<b>Supported Technology</b>	SMC® immunoassays MILLIPLEX® immunoassays	MILLIPLEX® immunoassays
<b>Instrument Control</b>	Touchscreen and computer software	Touchscreen and computer software
<b>Features</b>	<ul style="list-style-type: none"> <li>• Custom magnetic plate specific for use with SMC® technology</li> <li>• Ultrasonic Advantage™ program and 4 buffer switching</li> <li>• Optimized cell wash including Shaking &amp; Soaking</li> </ul>	<ul style="list-style-type: none"> <li>• Supports 96-well magnetic bead washing</li> <li>• Ultrasonic Advantage™ program for maintenance</li> <li>• Quick menu for priming and washing</li> </ul>
<b>Wash Protocols</b>	Pre-programmed with SMC® and MILLIPLEX® assay wash protocols	Predefined sample methods for easy operation
<b>Plate Format</b>	96-well for SMC® assays 96- and 384-well for MILLIPLEX® assays	96-well plates
<b>Washer/Dispenser Options</b>	Vacuum filtration, biomagnetic separation	Biomagnetic separation
<b>Volume Range</b>	50 – 3,000 µL/well	25 – 3,000 µL/well, in 1 µL increments
<b>Residual Volume</b>	≤ 2 µL per well	≤ 2 µL per well
<b>Wash or Read Speed</b>	300 µL/well, 3 cycles; ≤ 30 s	300 µL/well, 3 cycles; ≤ 30 s
<b>Wash Cycles</b>	1 to 250	1 to 250
<b>Shaking</b>	Programmable up to 60 min: slow, medium, fast, or variable	Programmable up to 60 min: slow, medium, fast, or variable
<b>Automation Capability</b>	BioSpa, BioStack, BenchCel, 3rd Party	BioTek® BioStack microplate stacker and 3rd Party
<b>Footprint</b>	14" W x 17" D x 10" H (35.6 x 43.2 x 25.4 cm)	14" W x 17" D x 10" H (35.6 x 43.2 x 25.4 cm)
<b>Weight</b>	With internal buffer switching: 36 lb (16.5 kg)	30 lb (13.5 kg)

## Related Products

Description	Cat. No.
BioTek® 50™ TS Microplate Washer	40-301
BioTek® 800™ TS Absorbance Reader with Gen5™ Software	40-006
BioTek® MultiFlo™ FX Multimode Dispenser	40-999
SMC® Plate Washer Evaluation Kit	03-0165-00
Flat Magnet, for 96-Well Plates, for use with MILLIPLEX® Assays (and for use with Cat. No. 95-0004-06)	7103016
Flat Magnet, for 384-Well Plates, for use with MILLIPLEX® Assays (and for use with Cat. No. 95-0004-06)	7103017
Handheld Magnetic Bead Washer Separator Block for 96-Well Flat Bottom or Conical Well Plates	40-285
BioTek® 800™ TS Product Qualification Package (to be sold with Cat. No. 40-006)	1560516
Absorbance Test Plate (to be sold with Cat. No. 40-006)	7260522
Vacuum Filter 96-Well (to be sold with Cat. No. 40-092AB)	1170008

### Enhance Your Workflows

Explore BioTek® washers for our platforms at [SigmaAldrich.com/smc-washer](https://SigmaAldrich.com/smc-washer) and [SigmaAldrich.com/milliplex-washer](https://SigmaAldrich.com/milliplex-washer)





# CADI: Custom Assay Development & Innovation

Accelerate your research with custom SMC®, MILLIPLEX®, and ELISA assays designed for your specific biomarker needs.

We understand you don't always have the time, resources, or expertise to develop your own assay for your protein of interest. Rely on our vast development expertise and our ability to produce high-quality, reproducible immunoassays to help you accelerate your program from discovery research into clinical trials with a custom-designed solution.



**Get started today!**

View a complete listing of services at [SigmaAldrich.com/customassay](https://SigmaAldrich.com/customassay)



## Fit-For-Purpose Custom Assay Project Workflow

Develop a new SMC®, MILLIPLEX®, or ELISA assay which is fit for your purpose. We follow a milestone-based approach to generate an assay that quantifies your exact protein or proteins of interest. You will receive updates and data reviews during each milestone, offering you peace of mind that your project is on schedule and meeting specifications.



## Example Custom Assay Offerings

Cat. No.	Description	Description
SPRCUS1014	Custom Human 384-Well Circulating Cancer Biomarker Panel 3 8-Plex	H (S/P, Sup, Lys)
SPRCUS1016	Custom Human 384-Well Angiogenesis Panel 2 20-Plex	H (S/P, Sup, Lys)
SPRCUS1042	Custom Human 384-Well Immuno-Oncology Checkpoint Protein Panel 17-Plex	H (S/P, Sup)

# Custom MILLIPLEX® Analytes

Analyte	Species (Sample Types)
α-1 Antichymotrypsin	H (S/P)
α-2 Antiplasmin	H (S/P)
AGP (α 1-Acid Glycoprotein)	H (U)
Angiopoetin-1	H (S/P, T)
Anti-Cardiolipin antibody IgA	H (S/P)
Anti-EBV VCA IgG	H (S/P)
Anti-Phosphatidylserine IgG, IgM	H (S/P)
Antithrombin iii	H (S/P, Sup, Lys)
Apolipoprotein A-IV	H (S/P)
Arginase 1	M (S/P)
AXL (s)	M, R (S/P)
BAD (Ser112)	H, M (Lys)**
BCMA (B-cell Maturation Antigen)	H (S/P)
BMP-9	M, R (S/P)
BRD4	H, M, R (Lys)
Caspase 3 (Active)	H, M (Lys)**
CBP	H, M, R (Lys)
CD13 Aminopeptidase N	H (S/P)
CD163 (s)	H (S/P)
Ceruloplasmin	H (U)
Cleaved PARP (total)	H (Lys)**
CSTB (Cystatin B)	H (S/P)
Elafin	H (S/P)
Extracellular Matrix Protein (ECM1)	H (S/P, Sup, Lys)
FGF-23	M (S/P, Sup)
Fibronectin	H (S/P)
G3BP (Galectin 3 Binding Protein)	H (U)
Gas-6	H, M, R (S/P)
Granzyme A	M (S/P)
Gremlin	M, R (S/P)
GRP78	H (S/P)
HGFR/cMET	M, R (S/P)
I-FABP	H (S/P)
IGF-1	M, R (S/P)
IL-18	M, R (S/P)
IL-33R/ST2 (Suppressor of Tumorigenicity 2)	H (S/P)

Analyte	Species (Sample Types)
Insulin	F (S/P)
Involucrin	H (S/P)
IRS1 (Ser133)	H, M, R (S/P)
IRS1 (total)	H, M, R (S/P)
Keratin-1,10	H (S/P)
Keratin-6	H (S/P)
LPGDS (Lipocalin like prostaglandin D synthase)	H (U)
Lysozyme C	H (S/P)
MIP-1γ	M, R (S/P)
MR-proADM	H (S/P)
Osteoprotegrin (OPG)	M (S/P, Sup)
p300	H, M, R (Lys)
p38/SAPK2A/B (Thr180/Tyr182)	H, M, R (Lys)**
p38/SAPK2A/B (total)	H, M, R (Lys)**
Periostin	M, R (S/P)
PODXL	M, R (S/P)
Prealbumin (Transthyretin)	H (S/P)
Procalcitonin	H, M, R (S/P)
Prostaglandin D Synthase (lipocalin-type)	H (S/P, CSF, Sup)
Sclerostin (SOST)	M (S/P, Sup)
Semaphorin 3A	H (Sup)
STAT1 (total)	H, M (Lys)**
Tenascin C	M, R (S/P)
Testosterone	Mul (S/P, Sup)
Thyroxine Binding Globulin	H (S/P)
TRAIL	M, R (S/P)
Transferrin	H (U)
Vasopressin	M, R (P)
VE Cadherin/Cadherin 5	H (S/P)
Vitamin D Binding Protein	H (S/P, Sup, Lys)
Vitronectin	M, R (S/P)
Wnt-3a	H (S/P, Sup, Lys)
Zinc-α-2 Glycoprotein	H (S/P)

## Species Key

<b>H</b>	Human
<b>M</b>	Mouse
<b>R</b>	Rat
<b>F</b>	Feline
<b>Mul</b>	Multi-Species

## Sample Type Key

<b>CSF</b>	Cerebral Spinal Fluid
<b>Lys</b>	Cell/Tissue Lysates
<b>S/P</b>	Serum/Plasma
<b>Sup</b>	Cell/Tissue Culture Supernatants
<b>T</b>	Tears
<b>U</b>	Urine

## Notations

<b>s</b>	Soluble analyte
<b>**</b>	No standard/QC; levels reported as MFIs (Median Fluorescence Intensities)

CUSTOM

CUSTOM ASSAY DEVELOPMENT & INNOVATION (CAD1)

FOR RESEARCH USE ONLY. NOT FOR USE IN DIAGNOSTIC PROCEDURES.

# Beyond the Assay Development Workflow

In addition to our assay development services, we can support your other custom assay needs.

## Our additional capabilities include:

### Switching Formats

- MILLIPLEX® Assays: 96-well to 384-well
- SMC® Assays: bead-based to plate-based
- Converting MILLIPLEX® assays to SMC® assay platform

### Sample Testing

- Prototype sample testing
- Proprietary kit sample testing (SMC® assays only)
- SMC® immunoassay kit testing (SMC® assays only)

### Biotherapeutic Assay Development

- Pharmacokinetics
- Pharmacodynamics
- Immunogenicity

### SMCxPlore™ Proof of Concept Sample Testing:

Use our SMCxPlore™ proof of concept sample testing service to “explore” SMC® technology with your analyte of interest or critical samples. Test up to 30 of your critical samples using one of our highly verified SMC® immunoassays.

### Questions About CADI?

Explore our FAQs at [SigmaAldrich.com/cadi-faqs](https://SigmaAldrich.com/cadi-faqs)





# Beyond Biomarkers

Keep your focus on the next stage

## Rigorous Assay Development

### Specificity ●●

- Antibody specificity is tested to ensure negligible cross-reactivity in the tested sample types
- Assay specificity is ensured by confirming consistent performance in singleplex and multiplex formats

### Method Comparisons ●●

- We test our kits against in-house kits and kits from other vendors when available, ensuring the highest performing kits

### Selectivity ●●

- Assay buffers and bead diluents are optimized to enhance antibody binding to only those analytes of interest in samples

### Detection and Sensitivity ●

- The assay range and minimum detectible concentrations (minDCs or LLOQ) for each analyte is published in our protocols, and is based on actual samples

### Performance in a Sample Matrix ●

- Assays are verified for the sample type noted in the protocol; for serum/plasma sample kits, we provide an optimized serum matrix to mimic the environment of the sample, normalizing assay performance

## Reproducible Results You Can Trust

### Stability ●●

- All kits are rigorously tested for shipping stability to determine impact on each analyte
- Sample stability is examined at a range of temperatures, and by freeze/thaw

### Precision ●●

- Precision of control standards are typically within 15% CV for intra-assay and 20% CV for inter-assay

### Accuracy ●

- Spike recovery in sample is performed for each analyte at three concentrations; accuracy is normally within  $\pm 30\%$

### Dilution Linearity/Parallelism ●

- Diluted sample results must be directly proportional to the concentration of analyte in the sample, typically within  $\pm 30\%$

### Lot-to-Lot Consistency ●

- A “gold standard” calibrator is defined during assay development and used as a reference for all future production lots

We'll help you choose the right platform and assays to meet your needs today, and we'll partner with you to meet those needs in the future — without compromising quality.

- Screening Assays
- Qualified and Verified Assays



# Millipore®

Preparation, Separation,  
Filtration & Monitoring Products

Merck KGaA  
Frankfurter Strasse 250  
64293 Darmstadt, Germany

**SigmaAldrich.com**



Scan to download  
a digital copy.



**Keep up to date!**

Don't miss out on updates by  
signing up for our newsletter:  
**SigmaAldrich.com/analyteupdate**

## To place an order or receive technical assistance

Order/Customer Service: [SigmaAldrich.com/order](https://SigmaAldrich.com/order)  
Technical Service: [SigmaAldrich.com/techservice](https://SigmaAldrich.com/techservice)  
Safety-related Information: [SigmaAldrich.com/safetycenter](https://SigmaAldrich.com/safetycenter)

We have built a unique collection of life science brands with  
unrivalled experience in supporting your scientific advancements.

**Millipore® Sigma-Aldrich® Supelco® Milli-Q® SAFC® BioReliance®**

© 2024 Merck KGaA, Darmstadt, Germany and/or its affiliates. All Rights Reserved. Merck, the vibrant M, Millipore, Sigma-Aldrich, Supelco, Milli-Q, SAFC, BioReliance, MILLIPLEX, MAPmate, SMCxPRO, Belysa, and Conferma are trademarks of Merck KGaA, Darmstadt, Germany or its affiliates. All other trademarks are the property of their respective owners. Detailed information on trademarks is available via publicly accessible resources.